

Technical Data

The Fluke iSee™ Mobile Thermal Camera - TC01A



Bring iSee™,

See more...

Find more...

- 256 x 192 pixels, detailed image quality
- -10 ~550°C range, covering wide applications
- ±2% or ±2°C accuracy, reliable and stable
- 25Hz frame rate for smooth video recording

Explore the real world for visible details.

With the Fluke iSee™ Mobile Thermal Camera - TC01A, temperature can be measured and thermal imaging detection can be carried out anytime and anywhere through the Type C interface of smart phone. It can facilitate quick checking during electrical and mechanical inspections, residential and commercial uses, household HVAC inspection, field observation, and education purposes, which uncovers the invisible world of temperature.

Detailed image quality comparable to professional thermal cameras

- 256 x 192 pixels, detailed image quality
- 10 ~550°C temperature range, suitable to use in many applications
- 50 mk (0.05°C) thermal sensitivity for fine differences
- ±2% or ±2°C accuracy to ensure reliable results
- 25Hz frame rate for smooth video recording
- Customize image view with more than 10 standard or custom color palettes

Powerful full temperature range analysis

- Never miss any detail with real-time high and low temperature capture
- Adjustable emissivity to apply with different materials
- Comprehensive temperature analysis for spot, line and area, supported with professional thermal imaging mobile software
- Real-time temperature alarm for timely response of abnormal condition
- Automatic time-lapse capture mode
- Infrared and visible image comparison for locating, comparing and archiving

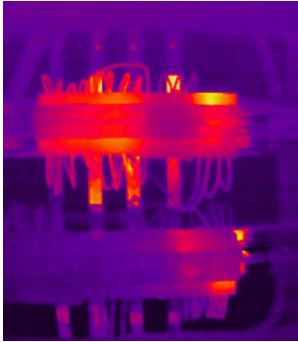
Real-time image sharing for fast and easy communication

- Easy image and video management through real-time communication
- Easy to add image annotation for smooth communication

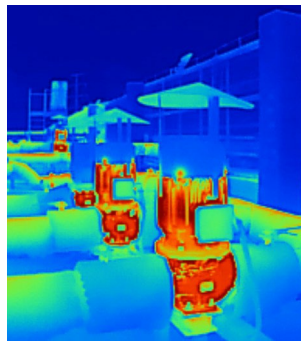
Small and portable, takes only a second to get started

- Compact design as light as 22 g
- The iSee™ is made of high quality specially treated aluminum material with laser etched surface
- Durable. Up to 1 meter drop test, IP54 ingress protection
- Optimized Fluke iSee™ application interfaces and menus, to enhance user experience with easy to access functions

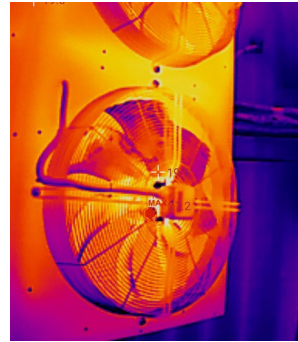
Fluke iSee™ application scenarios



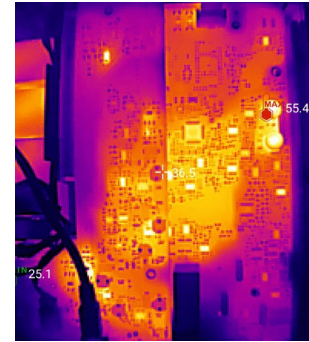
Electrical cabinet



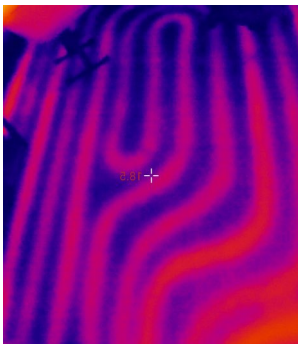
Motor



Fan



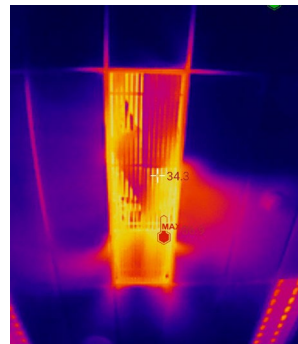
Circuit Boards



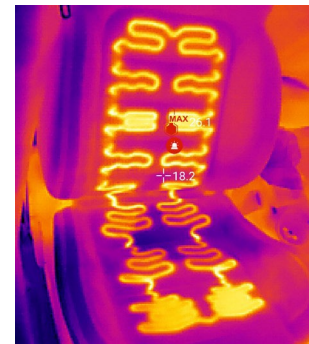
Floor heating



At outdoor



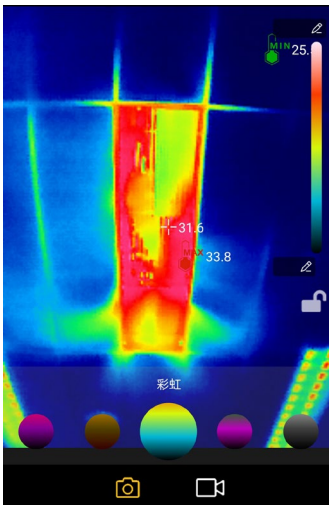
Air conditioner vent



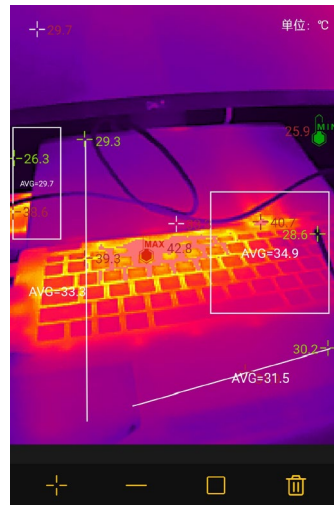
Heated car seats

iS iSee™ APP icon

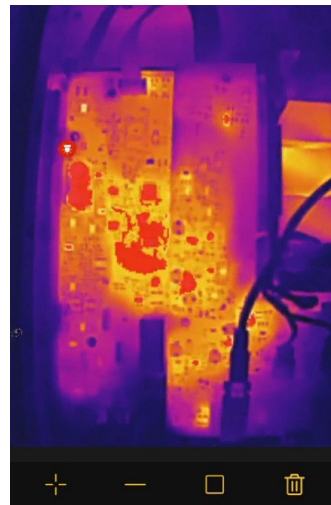
Integrated key functions of a professional thermal camera: shooting, measurement, analysis and sharing.



Palette choices



Spot and line analysis



Share images

*The Fluke iSee™ APP supports Android 6.0 / HarmonyOS 2.0 or later and requires smartphones with OTG function enabled



Scan code to download the Fluke iSee™ mobile thermal camera app

Detailed Specifications

Performance specifications	
IR resolution	256 x 192
Pixel size	12 µm
Temperature range	-10 °C to 150 °C, 100 °C to 550 °C
Temperature accuracy	± 2% of rdg or ± 2 °C, whichever is greater (@ 25 °C±5 °C ambient temperature)
Temperature measurement distance	0.25 m to 5 m
Frame rate	25 Hz
Warm-up time	1 minutes
Focal length	Fixed focal length: 3.2 mm
Shutter mode	Internal
Thermal sensitivity (NETD)	50 mK
Spectral range	8 to 14 µm
Field of view (H x V)	56°x 42°
Spatial resolution	3.81 mrad
General Specifications	
USB Interface	Type-C
Operating temperature	0 °C to 40 °C
Storage temperature	-30 °C to 60 °C
Operating humidity	10% to 90% RH, non-condensing
Power consumption	350 mW (Typical)
Drop test	1m
Ingress protection	IEC 60529: IP54 (with the protective cover for Type C)
Operating altitude	2000 m
Storage altitude	12000 m
Dimensions(L x W x H)	59 x 32 x10 mm
Weight	22 g
EMC Environment	<p>IEC 61326-1: Portable CISPR 11: Group 1, Class A</p> <p>Group 1: Equipment has intentionally generated and/or uses conductively-coupled radio frequency energy that is necessary for the internal function of the equipment itself. Class A: Equipment is suitable for use in all establishments other than domestic and those directly connected to a low-voltage power supply network that supplies buildings used for domestic purposes. There may be potential difficulties in ensuring electromagnetic compatibility in other environments due to conducted and radiated disturbances. Caution: This equipment is not intended for use in residential environments and may not provide adequate protection to radio reception in such environments.</p>
Warranty	2 years

Ordering Information

- The Fluke TC01A Thermal Camera

Standard accessories

- The Fluke TC01A Thermal Camera
- Packaging box
- User manual



Fluke. Keeping your world up and running.®

Fluke Corporation

PO Box 9090, Everett, WA 98206 U.S.A.

For more information call:
 From other countries +1 (425) 446-5500
 Web access: <http://www.fluke.com>

©2023 Fluke Corporation. 7/2023