

Industrial Maintenance Solutions

Megger[®]



EN
ENGLISH

Who We Are

This catalogue provides a comprehensive overview of Megger's solutions, engineered to meet the distinct challenges of the modern industrial environment. Our focus is unified across three fundamental pillars: Safety, Reliability, and Insight.

For over a century, Megger has been the trusted partner for electrical test and measurement. For maintenance engineers and reliability managers, our name is synonymous with precision and dependability. We design tools that empower you to maintain critical assets, ensure operational continuity, and protect your most valuable resource—your people.

A COMMITMENT TO INDUSTRIAL EXCELLENCE

- **Unyielding Safety:** Our solutions are designed to exceed stringent safety standards. From initial commissioning to routine maintenance, Megger equipment provides the confidence needed to perform tests accurately and securely, protecting both personnel and infrastructure from avoidable risks.
- **Assured Reliability:** Uptime is not just a metric; it is the core of your operation. Our instruments deliver the precise, repeatable data required to identify potential faults before they lead to costly downtime. We provide the tools to transition from reactive repairs to a proactive maintenance strategy, ensuring your systems run continuously and efficiently.
- **Actionable Insights:** In an increasingly complex industrial landscape, data alone is not enough. Our equipment and software work in a unified ecosystem to transform complex electrical data into clear, actionable insights. This allows you to make informed decisions, prioritise maintenance tasks, and optimise asset performance with confidence.

This catalogue is designed to help you find the right solutions to keep your operations safe, reliable, and productive. Explore the following pages to discover how Megger can support your commitment to excellence.



Software solutions.....	6	EasyLoc Rx/Tx	38
CertSuite	6	General Maintenance Tools.....	40
CertSuite Asset	7	IMT100 IMT100 and IMT100X	40
PowerDB Pro	8	EVT100 and EVT100X.....	41
The Modern Industrial Landscape	8	MPAC208 / MPAC208-IECEX.....	42
Motor Testing Solutions	11	MPAC128 / MPAC128-ATEX	43
MTR105 and MTR105X.....	11	TC120	44
ADX.....	12	TC256	45
Megger Baker AWA-IV	14	TC256P.....	45
Megger Baker PPX Power Packs	14	TC640	46
Megger Baker EXP4000	15	Installation/Multifunction testers	
Megger Baker EP1000	15	and multimeters.....	47
Vibration Monitoring.....	16	Multimeters & Clamps	48
Insulation Testing Insulation Testing	18	Portable Appliance Testing.....	50
MIT400/2 Series	19	Apps.....	54
MIT480 Series.....	20	Megger Link App	54
MIT2500.....	20	Megger AVO Link App	54
MIT515/2 (5 kV), MIT1015 (10 kV).....	21	Megger MPCC Link App	55
MIT525/2 (5 kV), MIT1025/2 (10 kV),			
MIT1525/2 (15 kV).....	22		
S1-568/2 (5 kV), S1-1068/2 (10 kV),			
S1-1568/2 (15 kV).....	22		
HV-Tester 25 kV	23		
HV Test Set Series.....	23		
Low Resistance Testing.....	24		
DLRO2 & DLRO2X.....	24		
DLRO10 & DLRO10X.....	25		
DLRO100 Series	26		
MOM200A and MOM600A - 200 A / 600 A.....	27		
MJÖLNER 200 and MJÖLNER 600 - 200 A / 600 A ...	28		
MOM3 - 300 A.....	29		
Battery Testing	30		
BITE5 Series	30		
TORKEL900 Series	31		
TXL Series	32		
BVM	32		
MGFL100	33		
Cable Fault Location	34		
TDR500	34		
TDR2000/3, TDR2010 and TDR2050	35		
EZ-THUMP	36		
Ferrolux Rx	37		

The Modern Industrial Landscape: Navigating Complexity with Certainty

The industrial sector operates under relentless pressure. Demands for increased output, continuous uptime, and stringent safety compliance create a complex environment where there is no margin for error. In this landscape, the health of your electrical infrastructure is not just an operational detail - it is the foundation of your productivity, safety, and profitability.

We understand the challenges you face. Unplanned downtime can halt production, leading to significant financial losses and reputational damage. At the same time, the inherent risks of working with high-voltage systems demand an unwavering commitment to safety to protect your personnel and assets. Navigating these pressures requires a holistic strategy built on accurate data and actionable insights.

THE CRITICAL ROLE OF ELECTRICAL TESTING

This is where electrical testing transitions from a routine task to a strategic necessity. A robust testing programme is the cornerstone of any proactive maintenance strategy, providing the critical data needed to shift from reactive repairs to predictive asset management.

- **Mitigating Downtime:** Electrical testing allows you to identify signs of degradation and potential failure in critical assets like conveyor belts, batteries, and cables long before they lead to a shutdown. By detecting insulation weaknesses, connection issues, or other incipient faults, you can schedule maintenance on your terms, preserving operational continuity and maximising uptime.
- **Enhancing Safety:** The ultimate priority is to ensure every team member returns home safely. Rigorous electrical testing verifies the integrity of safety-critical systems in your factory. It provides the confidence that your infrastructure is secure and compliant with regulatory standards, creating a safer working environment for everyone.
- **Delivering Actionable Insights:** In an ecosystem of interconnected assets, isolated data points are not enough. CertSuite Asset software provides real-time condition monitoring and diagnostics, enabling you to proactively address issues and optimise maintenance schedules, ultimately improving asset reliability and reducing downtime.

By integrating a comprehensive electrical testing regime, you gain control over your electrical systems. You build a foundation of reliability and safety that enables your facility to meet its operational goals with confidence.



Software

In industrial electrical test and measurement workflows, supporting software plays a crucial role in turning raw test data into actionable insights, backed by structured reporting and compliance evidence. Modern industrial environments demand not only accurate field measurements but also seamless data management, trend analysis and audit-ready documentation that align with regulatory requirements and internal quality standards. By integrating test instruments with purpose-built software, organisations can centralise results, enforce test limits, track asset health over time and demonstrate conformity with standards across complex electrical systems.

Solutions such as CertSuite Asset and PowerDB Pro deliver these capabilities at scale: they consolidate results from diverse testers into a unified platform, automate report generation and support global compliance workflows for safety, maintenance and reliability teams. With access to live test results and remote testing reports, engineers can trend and identify degradation patterns before failures occur, benchmark performance across sites, and make informed decisions that improve uptime and optimise maintenance spend. Combined with accurate and reliable equipment, this software enhances productivity, reduces manual reporting effort and ensures that electrical test programmes consistently support safety, reliability and operational excellence.

CertSuite

Unified Electrical Test and Reporting Software

CertSuite is a powerful cloud-based platform that captures logged data directly from on-site mobile devices — even when offline — and synchronises it to the cloud once connectivity is restored. With robust offline capability, integrated barcode scanning, and intuitive mobile forms, field teams remain productive anywhere. Test data from multiple teams can be recorded simultaneously, monitored remotely, and consolidated for faster, more efficient reporting, compliance-ready reports, trend analysis and actionable insights — essential for industrial maintenance teams managing complex electrical assets.

The CertSuite Family Includes:

- **CertSuite Installation** – Focused on installation and wiring certification to national and international standards, ideal for validating low-voltage installation compliance and producing professional certificates.
- **CertSuite PAT** – Simplifies portable appliance testing and test result management with powerful cloud based certificate generation for PAT workflows, helping service teams and safety departments meet regulatory requirements efficiently and consistently.
- **CertSuite Asset** – Designed for easy capture of repetitive test data — including live-stream results — this solution enables efficient reporting and certification of industrial assets and electrical systems, ensuring compliance across equipment and power-infrastructure environments.

These tools streamline test data capture, reporting and compliance across industrial and site-level electrical testing, boosting accuracy, productivity, and maintenance confidence. As CertSuite is a software platform, new features and compatible products will be continuously added to meet customer needs and the changing technology landscape.

CertSuite Asset

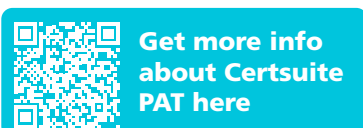
At its core, CertSuite Asset enables technicians to centralise and visualise test results from insulation, low-resistance, cable and motor diagnostics across power, control and plant infrastructure. By tracking asset condition over time, CertSuite Asset helps teams detect degradation early, optimise predictive maintenance strategies, and significantly reduce unplanned downtime.

Integrated across devices and locations, CertSuite Asset offers offline data entry with automatic cloud sync, secure Microsoft Azure storage, and simultaneous multi-user access for truly collaborative workflows. Reports can include graphs, trending charts, and detailed pass/fail histories to support informed decisions and streamline compliance audits.

CertSuite Asset Lite provides core functionality for offline work — allowing users to log data, view live test results, produce test reports, and access graphs directly on their mobile devices or computers — while storing all information locally and without the benefits of cloud-based collaboration and synchronisation.

Key Capabilities:

- **Cloud-based report generation:** Unlimited storage and secure access to test data and asset histories.
- **Maintain test records and graphs:** Visualise condition changes over time to support predictive maintenance and trending analysis.
- **Graphing:** Create the graphs you need from a choice of logarithmic scales with an option to remove up to 10s from the start of a stream along with a choice of line style.
- **Multi-device and offline support:** Works on smartphones, tablets, and browsers with offline entry.
- **Team collaboration:** Multiple users can access and update jobs concurrently using multiple instruments.
- **Compliance-ready documentation:** Professional reports for insulation, winding, cable, and asset tests, export results as PDF, CSV, or JSON.
- **Modern and mobile-friendly user interface:** Perform repetitive jobs efficiently and generate professional reports in seconds.
- **Configurable test limits:** Tests can be shown as pass/fail.
- **Simple test management:** Add new assets and tests as required, as well as manually entering test results from instruments not yet linked to CertSuite.
- **Advanced navigation:** View all the tests on an asset in a clear list, making it easy to navigate between tests and even between assets.



Software

PowerDB Pro

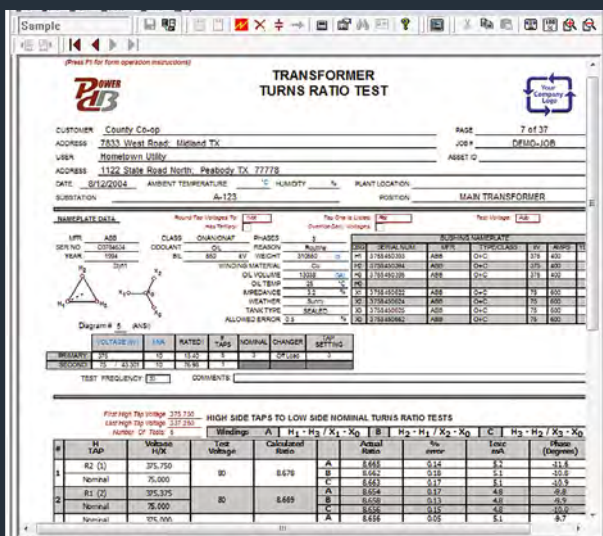
Enterprise-Grade Test Data and Asset Management Software

PowerDB Pro is a powerful Windows-based software platform designed to centralise, organise and analyse electrical test and maintenance data across an organisation's entire asset base. It provides a consistent, scalable database environment — extendable to Microsoft SQL Server — that consolidates results from insulation tests, relay, circuit breaker, and transformer diagnostics, battery testing, winding resistance measurements, and many other test types, simplifying long-term data visibility and management for industrial maintenance programmes.

Key Capabilities:

- **Comprehensive data integration:** Import and merge results from multiple test instruments and sources into a single searchable database, improving traceability and reducing manual entry errors.
- **Advanced trending and comparison:** Analyse historical test data to identify performance trends and degradation patterns, supporting condition-based maintenance decision-making.
- **Customised, compliance-ready reporting:** Generate professional reports or full test documentation packages quickly for audits, client deliverables and internal quality assurance procedures.
- **Job & asset tracking:** Store customer, contract and job metadata alongside test results for complete lifecycle visibility and easier retrieval of detailed maintenance histories.
- **Flexible test forms and automation:** Access hundreds of built-in industry standard forms and customise or create your own to match specific procedures and data capture needs.

PowerDB Pro equips industrial test teams with a robust foundation for reporting, trend analysis, compliance support and predictive maintenance, helping ensure electrical assets remain reliable, safe and audit-ready over time.







Get more info
about this
product here



Motor Testing Solutions

Electric motors operate under intense electrical, mechanical and environmental stress every day. Over time, these factors can lead to unexpected failures, costly downtime and expensive repairs. The key to avoiding these headaches? Proactive testing and monitoring using Megger's comprehensive dynamic and static testing and diagnostics tools. With regular assessments and corrective action – such as insulation assessment and Partial Discharge (PD) detection – you can maximise motor and generator reliability and safety, prevent premature failure and extend service life.

Motor testing is essential throughout a machine's lifecycle, from manufacturing and commissioning to operation and overhaul, but no single test can identify every fault—only a structured combination can provide a true picture of motor health. This includes offline (static) electrical tests to assess insulation and winding condition and establish baselines, online (dynamic) electrical tests to detect electrical and mechanical issues under normal operating conditions, and vibration monitoring to identify developing mechanical faults. Low-voltage tests enable early, non-stressful fault detection and trending, while high-voltage methods such as hi-pot, surge, and partial discharge testing reveal developing insulation weaknesses that could lead to failure. Used together in a regular testing regime, these methods maximise reliability and safety, prevent premature breakdowns, and extend motor service life.

MTR105 and MTR105X

Rotating Machine Tester

The MTR105 takes the test abilities of Megger's proven IR test instruments adding DLRO four wire Kelvin low resistance test, inductance and capacitance tests to provide a versatile motor tester, all packaged in a robust handheld instrument.

The latest evolution of the trusted MTR105, the MTR105X is a dedicated handheld Static Motor Tester with all the same great features as the MTR105 plus a range of additional key diagnostic functions. The key difference is that you can transfer your test results to CertSuite using Bluetooth for streamlined asset management and compliance reporting.

Both instruments incorporate temperature measurement and compensation (for IR tests), motor direction of rotation plus supply phase rotation tests. Provided in an over-moulded case, these

instruments have increased protection and robustness, achieving an IP54 weatherproof rating.

MTR105's testing capabilities include:

- Inductance, Capacitance and Resistance meter (LCR)
- 3 phase Insulation Resistance
- AC/DC/True RMS Voltmeter to 1000V with frequency and phase sequence indicator
- Temperature correction for insulation resistance
- Continuity (resistance) tests with diode check
- Motor direction of rotation
- DLRO 4-wire kelvin low resistance
- Guard terminal to detect surface leakage
- Enables live data streaming and secure transfer of test results to CertSuite Asset for simplified asset management, trending, and reporting.
- Instrument software update



Motor Testing Solutions

ADX

Automated Static Motor Analyser - with optional armature functionality

The Megger Baker ADX is an innovative and transformational leap forward for motor testing in today's demanding workplaces. Developed using Linux on an Android operating system, the ADX software is easily updated via a LAN or Wi-Fi connection. The large 10.4-inch touchscreen is tough and daylight viewable.

A fundamental requirement of hard-working test equipment is having the optimal test lead set. The ADX has IEC61010 safety compliance, combined high voltage / low voltage detachable Kelvin test leads, rated at 16 kV with a large jaw opening. The leads are available individually or in sets, so damaged leads can be replaced in the field without sending the equipment away – saving time and money.

An internal battery backup allows the ADX to be moved between assets without having to shut down and reboot at each new test location.

The ADX family includes models designed to perform tests at voltages up to 15 kV. The four main voltage options include 4 kV, 6 kV, 12 kV, 15 kV, and each with optional armature capability. Couple the ADX with a PPX power pack to increase test voltages up to 40 kV for testing high voltage assets.



Available ADX tests include:

- Winding resistance
- Inductance
- Capacitance
- Insulation resistance (IR)
- Dielectric Absorption (DA)
- Polarisation Index (PI)
- DC h-pPot (standard)
- DC hi-pot (step-voltage)
- DC hi-pot (continuous ramped)
- Surge analysis with EAR+™



Get more info
about the
ADX here

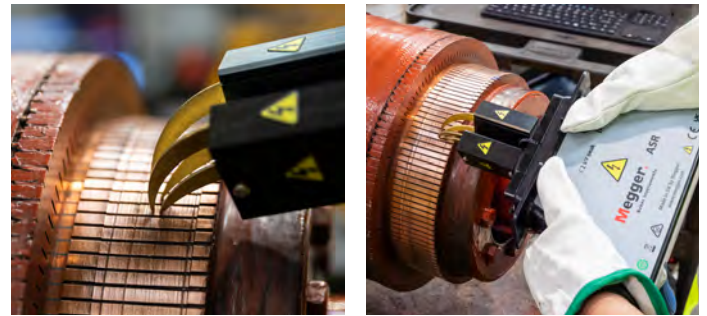


Motor Testing Solutions

ADX

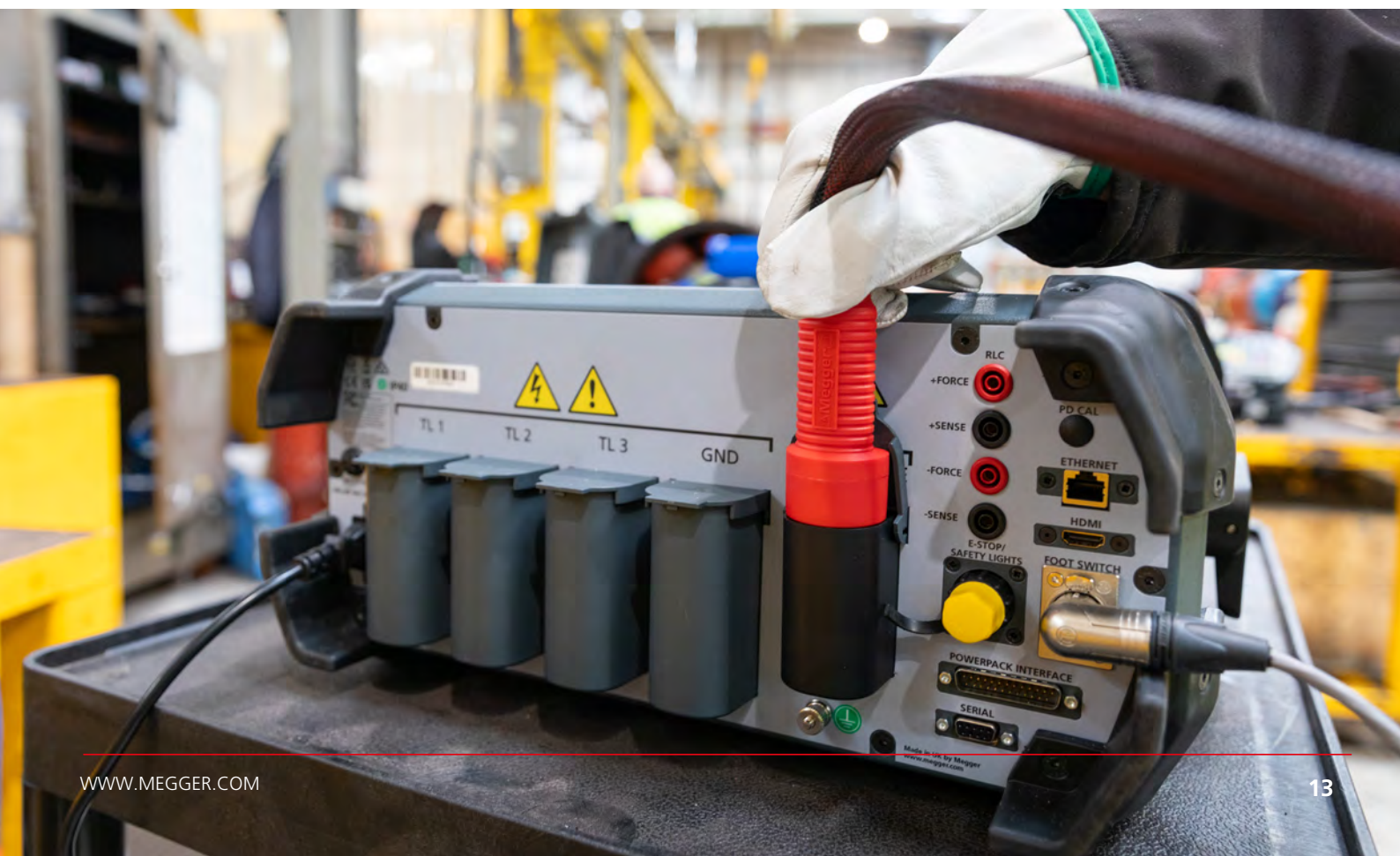
Features:

- Asset-centric approach promotes turnkey testing for operators
- Separating asset from installation provides greater insight into asset service needs and issues
- PowerDB Dashboard secure cloud-based analysis and trending & reporting software
- Choice of Manual, Automatic, or Sequence testing
- Screen-level context sensitive help
- Asset management tools
- Configurable route-based testing
- Android operating system
- Wireless networking capability for printing reports and updating software
- HDMI port for duplicating screen
- Wi-Fi enabled
- Removable test leads



Optional built-in armature test hardware:

- Provides bar-to-bar testing of DC armatures including winding resistance, inductance, and surge
- Eliminates the need for bulky external enclosure/hardware
- Increased efficiency and fewer connection points for streamlined testing
- Enhanced measurement circuits provide precision and stability
- Compatible with 30 kV and 40 kV power packs
- Optimised for consistent, reliable results



Motor Testing Solutions

Megger Baker PPX Power Packs

High-voltage motors and generators are critical to the operation of industrial plants and power generation facilities. Testing of this equipment during the manufacturing process, or in a plant as part of a predictive maintenance program, or in a motor shop before and after repair, requires equipment that can perform tests at voltages as high as 40 kV.

The Megger Baker Power Packs PPX30 and PPX40 provide increased test voltage ranges for our static motor and coil analysers (the Megger Baker DX, ADX and Megger Baker AWA-IV series), up to 30 and 40 kV respectively. This makes these power pack/analyser combinations ideal for assessing insulation condition on form-wound coils, high-voltage AC motors, large DC motors and transformers.

Effective testing of medium and high voltage apparatus insulation requires a range of tests to characterise and locate insulation weaknesses and defects. Megger Baker power packs used with Megger Baker static motor analysers thoroughly test the ground wall insulation between a motor's stator core and its windings by combining multiple tests, including:

- Megohm test
- Dielectric Analysis (DA)
- Polarization Index (PI)
- DC hi-pot (standard)
- DC hi-pot (step-voltage)
- DC hi-pot (continuous ramped)
- Surge analysis with EAR



Get more info
about the
product here



Motor Testing Solutions

Megger Baker EXP4000

Dynamic Electric Motor Analyser

- Monitors and assesses conditions across a running 'machine system'
- Evaluates the quality of incoming power fed to motor
- Assesses motor performance indicators
- Tracks the amount and condition of load placed on the motor

Maintenance professionals need to minimise repair costs associated with unexpected motor failures and production downtime. The Megger Baker EXP4000 Dynamic motor analyser is a motor system monitoring and troubleshooting tool that helps maintenance personnel minimise failures and maximise uptime of motor-driven systems.

The EXP4000 uses advanced software algorithms to monitor and assess conditions across a motor/machine system that impacts the health and performance of the motor. It evaluates the quality of power fed to a motor, assesses motor performance, and examines the condition of the load using torque analysis. The torque ripple software helps to highlight load/process fluctuations. This insight makes the EXP4000 a powerful predictive maintenance and troubleshooting solution.

The Microsoft Windows-based Megger Baker EXP4000 acquires data in several testing domains. These include:

- Power quality
- Machine performance
- Current
- Spectrum
- Torque
- Variable-frequency drives
- Transient analysis
- Efficiency

The analyser can be connected at a motor junction box inside a motor control cabinet (MCC), or from the outside of an MCC when equipped with an EP1000 Dynamic Motor Link.



Megger Baker EP1000

Dynamic Motor Link Interface to the EXP4000

The EP1000 is a permanently installed interface which makes it safe, easy and quick to connect the EXP4000 analyser to a motor's voltage and current signals. Installed in the MCC, the EP1000 includes a low-voltage front panel connector which allows a technician to use the EXP4000 without opening the cabinet.



Vibration Monitoring

MEGGER INDUSTRIAL RELIABILITY

Megger Industrial Reliability provides a fully integrated, end-to-end service designed to meet the unique demands of industrial environments. Backed by over 25 years of condition monitoring expertise, advanced hardware and software, and dedicated Co-Engineer™ support, we help you transition from reactive maintenance to predictive excellence.

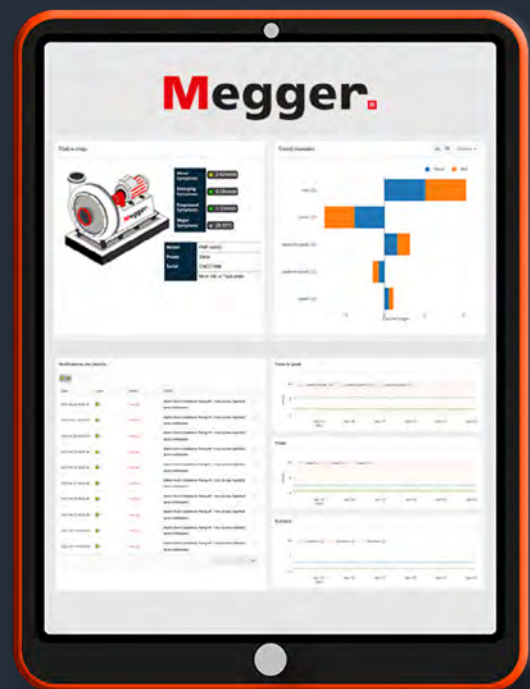
Our reliability service, powered by the cloud-based Opus PdM platform, transforms raw sensor data into actionable intelligence. This gives maintenance teams complete visibility of a critical rotating assets condition through a secure, scalable system built for industrial operations. With this solution, you can make confident, data-driven decisions while reducing downtime, minimising risk, and optimising asset performance.

We develop and support our own vibration analysis equipment, delivering practical insights that help you make informed maintenance decisions. Our all-in-one 'Solution as a Service' combines expert support, smart vibration monitoring software for industrial machines, and equipment reliability testing to reduce unplanned downtime, extend asset life, and give engineering managers the time and space to lead while providing business ROI.

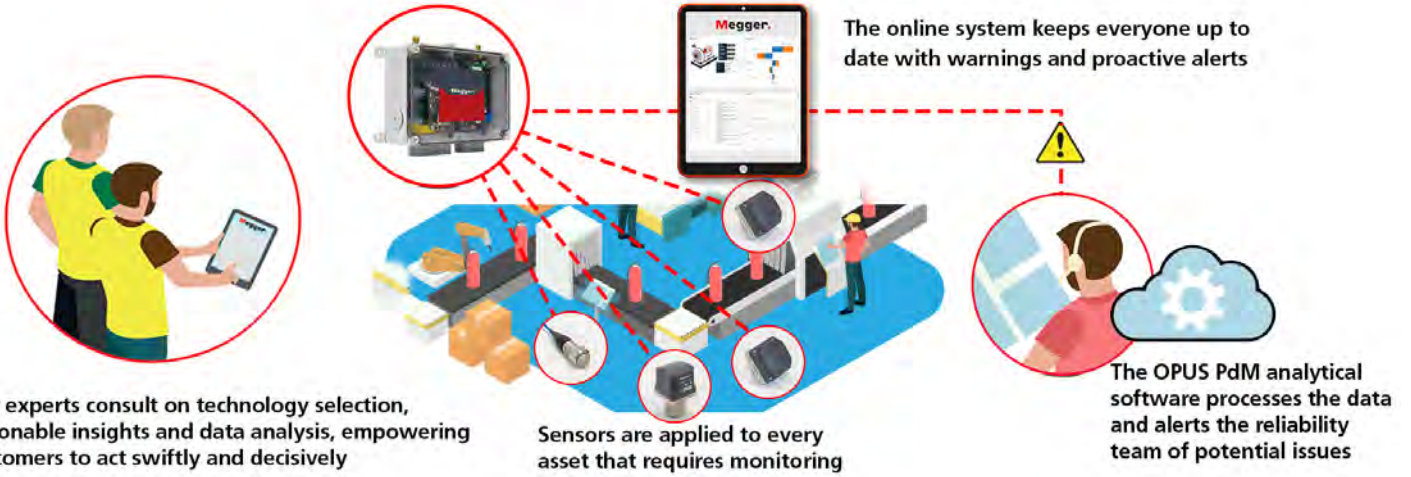
Key Capabilities:

- **Continuous Monitoring:** Real-time insights into the health of critical rotating assets.
- **Advanced Analytics:** AI-powered vibration analysis and fault detection tailored for industrial equipment.
- **Predictive Insights:** Identify and address issues before they disrupt operations.
- **Global Access:** Secure, cloud-based platform for seamless monitoring across all facilities.

With Megger Industrial Reliability, you gain a trusted Co-Engineer™ - your reliability partner to transform raw monitoring data into validated, business-focused insights. Our expertise and service model empower strategic decision-making, not just fault detection, ensuring your operations achieve maximum uptime and performance.



Vibration Monitoring

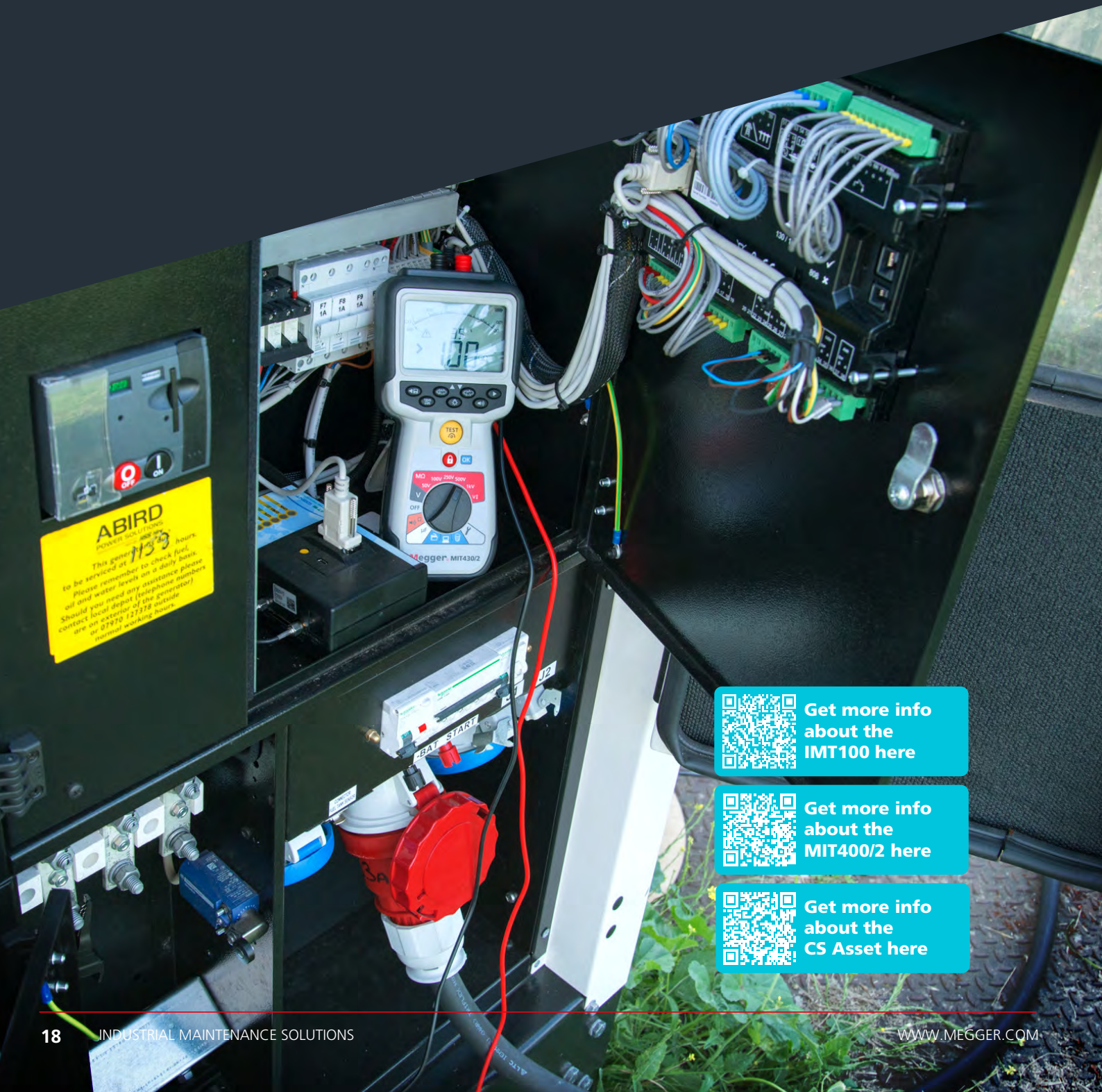


Get more info about our vibration monitoring solutions here

Insulation Testing

Insulation testing is one of the most effective ways to assess the condition of electrical assets and prevent unexpected failures. From low-voltage installations to high-voltage motors, generators and cables, it provides early visibility of insulation deterioration caused by moisture, contamination, thermal ageing or mechanical stress. By establishing baseline measurements and tracking changes over time, insulation testing supports safer operation, more reliable maintenance planning and longer asset life.

Testing below 1 kV offers a quick, low-stress method for routine checks and early fault detection, while high-voltage insulation testing applies controlled DC stress to expose weaknesses that may not be apparent at lower test levels. Together, HV and LV insulation testing form a complementary approach, giving engineers the confidence to make accurate condition assessments, reduce downtime and protect critical equipment throughout its service life.



Get more info about the IMT100 here



Get more info about the MIT400/2 here



Get more info about the CS Asset here

Insulation Testing

LOW – MEDIUM VOLTAGE

MIT400/2 Series

The **MIT400/2 series** are rugged, CAT IV-rated insulation resistance and continuity testers designed for industrial electrical installation, maintenance and troubleshooting. Covering insulation testing up to **1000 V / 200 GΩ**, with stabilised lower test voltage levels and IP54 protection, the range scales from straightforward verification to advanced diagnostic testing with data storage and connectivity.

- **MIT400/2** – Core insulation (250/500/1000 V), continuity and AC/DC voltage testing for everyday industrial checks.
- **MIT410/2** – Adds low-voltage insulation (50/100 V) plus **PI** and **DAR** diagnostics.
- **MIT420/2** – Adds 50/100 V insulation testing, PI and DAR diagnostics, variable test voltage and onboard result storage for enhanced analysis and record keeping.
- **MIT430/2** – Full diagnostic capability with 50/100 V insulation testing, PI and DAR, variable test voltage and Bluetooth® download for seamless data transfer.



Get more info
about the
product here

Insulation Testing

LOW – MEDIUM VOLTAGE

MIT480 Series

Purpose-built for telecommunication applications, the MIT480/2 series provides 3 terminals for A, B and E (Tip, Ring and Ground) connection to allow testing of individual pairs, without disconnection. With the 500 V test gated to prevent damage, stabilised voltage output, IP54 rating and differential measurement all as standard, both models provide the telecommunication engineers with a comprehensive solution. These are optional rechargeable batteries and the MIT485/2 also includes Bluetooth data transfer.

- **MIT481/2** - three-terminal 50 V to 500 V + storage and recall.
- **MIT485/2** - the same functions as MIT481/2 + Bluetooth download.

MIT2500

Best for engineers and specialists who require high-accuracy insulation testing up to 2.5 kV, ensuring compliance, reliability and safety in critical electrical infrastructure.

The MIT2500 meets the high-voltage testing demands of industrial and electrical maintenance applications such as PV farms. This instrument has an impressive 200 G Ω range. It offers a Guard terminal for high-resistance accuracy and includes features such as Polarisation Index and Dielectric Absorption Ratio.



Insulation Testing

HIGH VOLTAGE

The Megger MIT and S1 insulation resistance testers are trusted by professionals worldwide not only for their accuracy and reliability, but because they are proven to be the safest testers on the market.

Some key features across all models include:

- **RE>Act mode (patent pending)** — ensures safety by monitoring discharge to avoid dangerous return voltages. Increases efficiency by showing when insulation is ready to retest, saving time between retests. Delivers cost-savings by avoiding errors from residual reabsorption current.
- **Advanced safety features** — including dual fire-retardant casing designed to contain arc flash, voltage warning before testing, real-time noise alerts, and a new in-test voltage detection, and a new in-test voltage detection system that alerts the user if live voltage exceeds reinforced insulation level during IR testing.
- **CAT IV safety rated** across all terminals, including the Guard terminal.
- **Bright colour display for easier operation** — with improved visibility in sunlight, wide viewing angles, and a higher temperature rating for demanding environments.
- **PI Predictor™ (patented)** — provides the PI value in up to half the time of a standard test, without compromising accuracy.
- **CAT IV safety rated** across all terminals, including the Guard terminal.
- **Enhanced noise immunity in Advanced and Expert models** — delivering stable, accurate results even in noisy environments.
- **Bluetooth®** connectivity for ease of data analysis and reporting with CertSuite Asset.
- **PDC testing via software** — provides the diagnostic depth needed for condition assessment and maintenance planning.

MIT515/2 (5 kV), MIT1015 (10 kV)

Essential

The Essential models are ideal for routine insulation checks, go/no-go testing, and maintenance tasks where simplicity matters. You get all the core innovations of the Mark 2 range — including PI Predictor™ and RE>Act Mode — in a streamlined, cost-effective package.

Straightforward, affordable, and built for everyday testing. Ideal for frontline technicians and basic insulation diagnostics performing routine maintenance, field use and general inspection.

Key features:

- **PI Predictor™** – patented early PI result estimation.
- **RE>Act Mode** – safe, fast retesting with residual current insight.
- **Bright colour display** – clear visibility in all conditions.
- **Dual fire-retardant casing** – rugged and arc-flash resistant.
- **Simple rotary interface** – intuitive, glove-friendly operation.
- **Hardware noise** filtering for stable results.

No onboard memory or data transfer – just accurate dependable performance when you need it most.



Insulation Testing

MIT525/2 (5 kV), MIT1025/2 (10 kV), MIT1525/2 (15 kV)

ADVANCED

The Advanced models are ideal when you need more than just a reading. With internal memory, flexible diagnostics, and data export options, they streamline your workflow without overcomplicating it. You get all the benefits of the Essential range — plus more control, more insight, and more ways to save time.

Greater diagnostic depth with storage and connectivity built in. Perfect for users who need flexibility, result tracking, and faster workflows within Industrial HV testing, OEMs and motor maintenance.

Key features:

- All Essential model features.
- Onboard memory – store test results with time/date stamping.
- Advanced test modes – including ramp, step voltage, and dielectric discharge.
- Selectable short-circuit current – for added control during testing.
- IEC lead charging – charge and test at the same time.



Get more info about the product here

S1-568/2 (5 kV), S1-1068/2 (10 kV), S1-1568/2 (15 kV)

EXPERT

The Expert models are engineered for the toughest environments and the highest testing demands. They combine every advanced feature in the range — with enhanced noise rejection, remote control, and full connectivity for streamlined diagnostics and reporting. If you're working on critical infrastructure or need absolute confidence in every result, this is your tester.



Key features:

- All Advanced model features.
- Adaptive noise filter – real-time rejection of electrical interference.
- Rolling average filter – firmware-based smoothing with configurable time windows.
- Remote control via USB – test from a safe distance.
- Selectable short-circuit current – with higher output range.
- Improved charge/discharge performance – for faster, more efficient cycles.



Get more info about the product here

HV-Tester 25 kV

Hi-Pot testing

The HV Tester 25 kV and 25 kV Digital are robust high-voltage insulation resistance testers designed for demanding industrial, utility and power distribution applications where comprehensive validation of insulation integrity is essential. Delivering up to 25 kV DC test voltage, these instruments help engineers assess the condition of large cables, generators, transformers and other high-stress electrical assets, identifying degradation and weak insulation before failures occur.

Key Capabilities

- **High-voltage testing up to 25 kV for thorough insulation assessment on HV cables and equipment.**
- **Wide resistance measurement range suitable for large systems across utilities and industrial plants.**
- **Digital display (25 kV Digital) for clear, precise readings and easier interpretation.**
- **Portable, field-ready design for on-site commissioning and diagnostic testing.**
- **Safety features and automatic discharge for improved operator protection.**



Get more info
about the
product here

These testers provide the high-energy capability and reliability required for effective insulation verification and preventive maintenance on critical high-voltage electrical infrastructure.

HV Test Set Series

Hi-Pot testing

The HV Test Set Series are robust high-voltage insulation testers designed for industrial, utility and power system applications that demand high-energy testing. With selectable DC test voltages typically ranging up to 5 kV–10 kV and beyond, these instruments help maintenance, commissioning and reliability teams verify insulation performance on large cables, transformers, switchgear and other critical electrical assets. By applying controlled high-voltage stress and measuring resistance, they enable early detection of insulation deterioration, moisture ingress and manufacturing defects that could lead to costly failures.

Key Capabilities

- **Selectable high-voltage output:** Multiple DC test voltages cover a broad range of high-voltage insulation testing needs.
- **Wide resistance range:** Supports accurate insulation resistance measurement on large assets and extended cable systems.
- **Built-in safety features:** Automatic discharge and insulation protection enhance operator safety during high-voltage tests.
- **Clear, easy-to-read displays:** Simple interfaces help technicians interpret results quickly in the field.
- **Portable and rugged:** Field-ready construction allows reliable testing on site, even in demanding environments.

The HV Test Set Series delivers the high-energy capability and durability required to support thorough insulation verification and preventive maintenance on critical high-voltage infrastructure in industrial and utility networks.

Low Resistance Testing

Low resistance testing is a critical requirement in industrial environments and data centres, where high currents, continuous operation, and harsh conditions place significant stress on electrical connections. It is used to verify the integrity of, circuit breaker contacts, transformer connections, server racks, UPS battery racks, bonding, and earthing systems—areas where even small increases in resistance can lead to overheating, efficiency losses or catastrophic failure. Our solutions ensure uptime, efficient operations, and resilient infrastructure, safeguarding both performance and safety across the entire power chain.

In industrial maintenance and commissioning, low resistance testing provides clear, actionable insight into the condition of assets. Establishing baseline values and trending results over time allows maintenance teams to identify deterioration caused by vibration, thermal cycling, corrosion or mechanical wear, and to intervene before faults impact safety or production. As part of a structured testing regime, low-resistance testing helps minimise unplanned downtime, improve reliability of critical processes and support safe, compliant operation of industrial electrical systems.

DLRO2 & DLRO2X

The DLRO2 series are rugged, handheld low-resistance ohmmeters engineered for precise, reliable measurement of micro-ohm values in industrial, utility, rail and aviation applications. Both models deliver a 2 A DC test current for fast, accurate resistance readings, even in electrically noisy environments, and are safety rated CAT III 600 V / CAT IV 300 V with IP54 protection for demanding field use.

DLRO2 – Core Features

- Fast, repeatable low resistance measurements with a Difference Meter for easy comparison against reference values.
- Dedicated long-lead test mode supporting up to 1 A into $\sim 4 \Omega$, ideal for extended cable and lightning protection testing.
- Safe operation with active protection against inadvertent live connections up to 600 V without blowing fuses, and robust design for industrial environments.

DLRO2X – Advanced Capabilities

- Includes all DLRO2 features plus data storage and noise rejection with patented Confidence Meter™ for stable readings in high electrical noise.
- Bluetooth® and USB connectivity for seamless results export and compatibility with CertSuite Asset software for asset-based test management.
- Enhanced workflow for trend tracking, test limits, and automated reporting, boosting productivity and integration into maintenance programmes.

These instruments support robust low resistance testing across a wide range of industrial maintenance and verification tasks, helping technicians identify poor connections, degraded joints, and other issues that can impair equipment performance and safety.



Low Resistance Testing

DLRO10 and DLRO10X

The DLRO10 series are industrial-grade digital micro-ohmmeters designed to deliver 10 A DC test current for highly accurate low-resistance measurement in demanding applications such as power generation, utilities, rail, heavy industry, and electrical maintenance. These robust instruments provide fast, stable readings on busbars, welds, cable joints, bonds, circuit breaker contacts, transformer windings, and more, helping maintenance teams diagnose poor connections and degraded interfaces that can lead to heat, energy loss or failure.



DLRO10 – Core Capabilities

- **10 A high-current testing:** Ensures accurate, repeatable measurement of very low resistance values.
- **Straightforward operation:** Large backlit display and simple keypad for efficient field use.
- **Industrial durability:** IP54 protection and safety ratings suited to harsh environments.

DLRO10X – Advanced Workflow Support

- **Data storage and connectivity:** Built-in memory with Bluetooth® and USB for data transfer to software such as CertSuite Asset.
- **Improved noise rejection:** Enhanced measurement stability in electrically noisy industrial locations.
- **Maintenance optimisation:** Supports test limits, tagging, and historical comparison for trend analysis.



DLRO10HD / DLRO10HDX – Heavy-Duty Field Models

- **Ruggedised construction:** Designed for harsher environments and extended testing on high-current assets.
- **Enhanced compliance:** Suitable for applications requiring longer test durations and increased robustness.
- **DLRO10HDX adds data management:** Onboard memory with PowerDB download capability for structured reporting and asset history tracking.

The **DLRO10 range** provides scalable performance—from core testing to heavy-duty, data-driven workflows—supporting reliable low-resistance.



Get more info about the DLRO10HD & DLRO10HDX here



Get more info about the DLRO2 here



Get more info about the DLRO2X here



Get more info about the DLRO10 & 10X here

Low Resistance Testing

DLRO100 Series

The DLRO100H and DLRO100XB are high-current, portable digital micro-ohmmeters built for demanding industrial low-resistance testing where precision and reliability matter most. Delivering up to 100 A DC test current, they measure resistance from 0.1 $\mu\Omega$ to 1.999 Ω with fine 0.1 $\mu\Omega$ resolution, making them suitable for assessing busbars, cable, and joint resistance, bonding verification, switchgear, and circuit breaker contacts under real-world conditions. Their lightweight, battery-powered design lets engineers perform high-current tests in remote or live environments without mains power, enhancing flexibility and productivity.

Key Capabilities

- **High test current performance:** Up to 100 A output for robust low-resistance measurement in heavy industry and utility applications.
- **Rugged safety rating:** CAT IV 600 V and IP54 protection ensure safe and reliable use on site even in harsh conditions.
- **Smooth DC output:** Minimises trip risk on circuit breakers and parallel systems during testing.
- **Portable and autonomous:** Rechargeable internal Li-ion battery supports up to ~200 tests per charge—ideal for remote locations.
- **Advanced workflow options (XB model):** Includes DualGround™ safety, data storage, USB download and Bluetooth for seamless record keeping and integration into maintenance systems.

The **DLRO100 series** provides industrial maintenance teams with powerful, accurate low-resistance testing tools that improve fault diagnosis, support preventive maintenance, and enhance operational reliability across a wide range of electrical assets.



Get more info
about the
product here



Low Resistance Testing

MOM200A and MOM600A — 200 A / 600 A

The **MOM200A** and **MOM600A** are mains-powered micro-ohmmeters designed for high-current contact resistance testing in substations and industrial facilities. Where handheld instruments excel in portability and speed, the MOM200A and MOM600A offer sustained, regulated DC output at 200 A and 600 A respectively, making them the preferred choice when test standards call for higher current levels or when continuous operation over extended periods is required. Both instruments are straightforward to operate with an intuitive front panel, analogue-style current control, and included 5 m Kelvin cable sets ready for immediate use in the field.

- **High sustained current:** The MOM200A delivers up to 200 A DC; the MOM600A up to 600 A DC — suitable for contact resistance testing to IEC and IEEE standards on medium- and high-voltage circuit breakers.
- **Precision measurement:** Resistance range of 0–1,999 $\mu\Omega$ with 1 $\mu\Omega$ resolution and $\pm 1\%$ accuracy, providing reliable, repeatable results at the high currents demanded by substation testing.
- **Ready to test out of the box:** Both units are supplied with 5 m current cables and 5 m sensing cables with clamps, eliminating setup delays in the field.
- **Robust protection:** Built-in miniature circuit breakers and thermal cut-outs protect the instrument and operator during demanding test cycles, with clearly defined duty cycle limits for safe sustained use.
- **Mains powered:** Operates on 115/230 V AC, 50/60 Hz — ideal for fixed workshop environments or site locations with access to mains supply, without the need for battery management.

The **MOM200A** and **MOM600A** provide straightforward, reliable high-current testing for maintenance teams who need proven performance on circuit breakers, busbar joints, and other high-current connections.



Get more info
about MOM200A
here



Get more info
about MOM600A
here



Low Resistance Testing

MJÖLNER 200 and MJÖLNER 600 — 200 A / 600 A

The **MJÖLNER 200** and **MJÖLNER 600** are fully automatic, microprocessor-controlled micro-ohmmeters representing the highest level of accuracy, safety, and workflow automation in the Megger Sweden portfolio. Designed specifically for contact resistance testing in high-voltage substations, they combine true DC ripple-free current output with the patented DualGround™ measurement method, allowing the test object to remain earthed on both sides throughout the entire measurement sequence for a safer, faster working environment. The rugged suitcase enclosure is rated IP63 with the lid closed and is designed to withstand water, dust, and sand — it even floats.

- **High current output:** The MJÖLNER 200 delivers 5–205 A DC; the MJÖLNER 600 delivers 5–605 A DC, both in 1 A steps with five user-configurable preset current values for rapid test setup.
- **Exceptional accuracy:** Resolution down to 0.01 $\mu\Omega$ on the lowest range, with a measurement range of 0–999.9 m Ω . Typical inaccuracy at 200/600 A is $\pm 0.1 \mu\Omega$ — among the highest available in portable micro-ohmmeters.
- **True DC, ripple-free output:** Ensures clean, stable measurements unaffected by mains interference, critical for repeatable results on sensitive breaker contacts.
- **DualGround™ safety method:** Both sides of the test object remain connected to earth throughout the test, eliminating the need to remove safety grounds and significantly reducing risk when working on live substations.
- **5" IPS touch screen:** The intuitive graphical interface supports six languages (English, German, French, Spanish, Swedish, Czech) and allows current ramping, continuous mode and single-shot testing from a single screen.
- **PC connectivity and software:** USB and RS232 interfaces support integration with MJÖLNER Win software for structured test management, automated reporting and Excel export. Full remote-control capability via optional mobile app.
- **Lightweight suitcase design:** The MJÖLNER 200 weighs just 7.3 kg (15.3 kg with cables and case); the MJÖLNER 600 weighs 14.1 kg (22 kg with cables and case) — making both genuinely portable for field commissioning.

Compliant with IEEE C37.09-2018 and IEC 62271-1:2017, the MJÖLNER series is the tool of choice for commissioning engineers and maintenance teams who require the highest accuracy and the safest possible working method when testing critical switching equipment.



Get more info
about the
product here



Get more info
about the
product here

Low Resistance Testing

MOM3 — 300 A

The **MOM3** is a handheld 300 A micro-ohmmeter purpose-built for measuring contact resistance in circuit breakers, busbar joints, and other high-current connections. Its ultracapacitor-based power system enables instantaneous delivery of very high currents with a regulated, stable output — eliminating the need for bidirectional measurements and significantly reducing test time. Rugged, lightweight, and designed for a full day of field work, the MOM3 is equally at home in a high-voltage substation or an industrial facility.

- **High current output:** Up to 300 A DC, with a selectable minimum current from 5 A to 300 A, making it suitable for a wide range of test standards and applications.
- **Wide measurement range:** Auto-ranging from 0.1 $\mu\Omega$ to 3,000 m Ω with 0.1 $\mu\Omega$ resolution at full current — no manual range selection needed.
- **Extended battery life:** Li-ion battery supports up to 500 measurements at 300 A, 1,500 at 100 A, or 2,000 at 50 A per charge, with a typical recharge time of 3 hours.
- **Large onboard memory:** Stores more than 2,000 measurements with timestamps, test current, and resistance values for full traceability.
- **Dual connectivity:** USB-C for direct PC data transfer; optional Wi-Fi for seamless upload to the Megger EGIL 200 Circuit Breaker Analyser.
- **Pass/Fail testing:** Configurable limits from 0.1 $\mu\Omega$ to 3,000 m Ω for go/no-go assessments in the field.
- **Lightweight and rugged:** At just 1.15 kg with IP54 protection, the MOM3 is built for confident use in demanding environments, including at altitude up to 3,000 m.

Compliant with IEEE and IEC standards, the MOM3 delivers fast, accurate, and fully traceable micro-ohm measurements for maintenance teams working on critical switching equipment.



Get more info
about MOM3
here

Battery Testing

Battery testing is essential in industrial environments where standby power systems protect critical processes, safety systems and production uptime. From substations and data centres to manufacturing plants, oil and gas facilities and transport infrastructure, batteries are relied upon to perform instantly during power disturbances - yet degradation often occurs silently over time. Battery testing provides early insight into loss of capacity, ageing cells and developing faults that cannot be identified through visual inspection or float voltage checks alone.

Industrial battery testing enables maintenance teams to assess true battery health and identify weak or failing cells before they compromise the entire system. Establishing baseline data and trending results over time supports predictive maintenance strategies, helping operators avoid unexpected failures, extend battery life and plan replacements more effectively. As part of a structured asset management programme, battery testing improves reliability of backup power systems, reduces risk to critical operations and supports compliance with industry standards.

BITE5 Series

The BITE5 and BITE5 Advanced battery impedance testers deliver fast, reliable assessment of battery health across industrial standby systems—whether lead-acid (VLA/VRLA), NiCd or lithium- and combines essential diagnostic tests with simple operation and powerful data handling.

Key Capabilities

- **Multi-chemistry support:** Test lead-acid, NiCd and lithium-ion cells and strings.
- **Impedance and voltage measurement:** Accurately measure cell impedance, voltage, temperature and ripple parameters to quantify state of health.
- **Discharge testing support:** Works with load banks to record voltage, current and impedance throughout the discharge cycle.
- **Module testing flexibility:** Standard BITE5 supports battery modules up to ~200 V DC; Advanced models extend to ~500 V DC.
- **On-board trending & smart workflow:** Intuitive touchscreen with pass/warning/fail limits, trend displays and easy data export via USB/SD or wireless transfer to PowerDB software.
- **Advanced features (BITE5 Advanced):** Measures inter-cell (strap) resistance and speeds testing of parallel strings without isolating segments, helping identify poor connections and corrosion.

These tools give industrial maintenance teams the actionable insight they need to detect weak cells early, track trend performance over time and make confident decisions that improve reliability and extend the life of critical backup power systems.



Get more info
about the
product here

Battery testing

TORKEK 900 Series

The TORKEK 900 series provides a reliable, high-capacity solution for battery discharge/load testing, the only method that reveals a battery system's actual usable capacity under real load conditions—making it indispensable for industrial maintenance of standby power systems in substations, data centres, manufacturing and critical infrastructure. Discharge testing with TORKEK gives maintenance teams confidence in capacity measurements, helping to uncover weak batteries that other tests might miss and supporting robust maintenance programmes that maximise uptime and safety.

Key Capabilities

- **Comprehensive capacity testing:** Determines true battery performance and health through controlled discharge tests conducted at constant current, constant power, constant resistance or custom load profiles.
- **High discharge capability:** Supports discharge currents up to 220 A to shorten test times; scalable with additional TORKEK or TXL load units for larger battery banks.
- **In-service testing:** Perform tests without disconnecting batteries from the equipment they support, eliminating downtime and the need for backup banks.
- **Integrated monitoring:** When paired with Megger's BVM battery voltage monitor, TORKEK becomes a standalone system that captures both capacity and individual cell voltage throughout the test.
- **Safety-first design:** Spark-free connections, automatic blocked-airflow detection and emergency stop features ensure safe operation in industrial environments.
- **Data handling:** Test results are logged onboard and easily exported via USB for analysis and reporting.



Get more info
about the
product here

Available in multiple models (910, 930, 950) to suit different current, voltage (from 2 V to 500 V) and monitoring needs, the TORKEK900 series is engineered to deliver accurate, efficient discharge testing that supports effective battery maintenance and enhances reliability of critical backup power systems.



Battery Testing

TXL Series

The TXL series comprises extra battery load units designed to work seamlessly with Megger's TORDEL battery discharge test systems to deliver higher load currents and expanded discharge capability for robust industrial testing. By adding one or more TXL units to a TORDEL tester, maintenance teams can significantly increase the load applied during battery discharge or power tests—enabling testing with higher currents and supporting larger, high-capacity battery banks typical of industrial standby systems.

Key Capabilities

- **Enhanced load capacity:** Expand discharge current beyond standard TORDEL limits to accommodate larger battery systems.
- **Seamless integration:** Connects directly to the battery under test with control and current regulation managed by the TORDEL unit for safe and accurate testing.
- **Multiple unit options:** A range of extra load models such as TXL830 Telecom Battery Load Unit, TXL870 Battery Load Unit and TXL890 Extra Load Unit lets you tailor the testing setup to the voltage and current requirements of diverse battery banks.
- **Flexible testing profiles:** Supports constant current or constant power discharge tests, helping to test real-world load conditions and assess true battery capacity.



Together with a TORDEL discharge tester, the TXL series delivers the power and flexibility needed for thorough capacity verification of industrial backup battery systems, ensuring accurate condition assessment and helping to maximise uptime of critical infrastructure.

BVM

The **BVM Battery Voltage Monitor** provides automated, high-accuracy cell and block voltage measurement for large industrial battery banks.

Designed to work with a discharge load device such as a TORDEL tester and data management software (PowerDB/TORDEL Viewer), the modular BVM units daisy-chain across battery strings to simplify setup, deliver precise voltage data during capacity tests, and support fully automated, standards-compliant discharge testing.

Its expandable architecture (up to 240 cells) and intuitive connectivity help maintenance teams capture reliable voltage profiles for trend analysis, early fault detection and confident capacity evaluation of critical backup power systems.



Get more info
about the
BVM here

Battery Testing

MGFL100

The MGFL100 is a specialised instrument for quickly and accurately locating ground faults in ungrounded DC and AC systems, including industrial battery banks—all without shutting the system down. Ideal for critical power infrastructure where uptime is essential, it helps maintenance teams pinpoint faults that can lead to leakage, safety hazards or performance degradation.

Key Capabilities

- **Non-intrusive fault locating:** Identifies ground faults on DC battery systems and ungrounded networks up to 600 V without taking systems offline, minimising disruption to operations.
- **Accurate measurement suite:** Directly measures ground fault resistance, system stray capacitance, real fault current and leakage current, helping differentiate real faults from reactive effects.
- **High impedance detection:** Locates faults up to 400 k Ω , including high-impedance issues caused by moisture ingress or insulation breakdown.
- **Audible/visual alerts:** Built-in alarms signal when a real ground fault is found, guiding technicians quickly to the fault path.
- **Safe, flexible operation:** Adjustable, password-protected current and voltage limits support safe testing; the lightweight transmitter/receiver combination makes field use easy.

By enabling fast, reliable ground fault detection in live systems, the MGFL100 supports proactive maintenance, enhances safety and helps ensure the continuous performance of industrial backup power and control systems.



Get more info
about the
MGFL100 here

Cable Fault Location

In industrial electrical systems, undetected cable faults can cause unplanned downtime, compromised safety and costly troubleshooting—especially in complex installations with long runs, buried feeds or concealed wiring. Cable fault location techniques provide precise identification of issues such as opens, shorts, intermittent connections, insulation breakdown and impedance changes, enabling maintenance teams to rapidly pinpoint problem areas without guesswork or dismantling infrastructure. By combining time-domain reflectometry with signal tracing and advanced fault interpretation, technicians can locate faults to within metres, minimise excavation or disruption, and reduce mean time to repair (MTTR) across power, control and communication networks.

Industrial fault location tools deliver high accuracy and reliability under challenging site conditions, supporting preventive maintenance and rapid response to failures on motors, feeders, underground cables and plant networks. Whether integrating reflectometer-based measurements, traceable test signals or rugged receiver/transmitter pairs, these solutions help maintenance teams quickly isolate faults, improve circuit reliability and support the safe, continuous operation of critical electrical assets.

TDR500

Handheld Time Domain Reflectometer

The TDR500/3 is a compact, rugged handheld time-domain reflectometer built for industrial cable fault location and integrity testing of metallic cable pairs across power, control and communication networks. Its intuitive operation with AUTO selection of optimal pulse and gain settings helps technicians quickly send a low-energy signal down a cable and precisely pinpoint the distance to opens, shorts or impedance changes—reducing troubleshooting time and guesswork on site.

Key Capabilities

- Up to 5 km test range with fine resolution to 0.1 m, suitable for long runs and complex cable layouts.
- AUTO setup and simple cursor control make fault identification fast and easy, even for less experienced users.
- Trace Hold function freezes the TDR trace on screen for comparison or documentation.
- Robust IP54-rated housing for reliable performance in industrial environments.
- Backlit high-resolution display improves fault recognition in varied lighting conditions.

Ideal for maintenance teams and field engineers, the TDR500/3 delivers fast, accurate cable fault location to minimise downtime, reduce excavation or panel stripping, and support preventive maintenance programmes across industrial installations.



Get more info
about the
TDR500 here

Cable Fault Location

TDR2000/3, TDR2010 and TDR2050

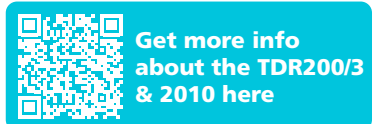
Advanced Dual-Channel Time Domain Reflectometers

The TDR2000/3, TDR2010 and TDR2050 are advanced dual-channel time domain reflectometers engineered for fast, accurate cable fault location across industrial installations, power and control networks, and long paired metallic cable runs. All three instruments deliver a wide 20 km (65 kft) fault-finding range with fine resolution (~0.1 m), intuitive color displays and dual-trace capability, enabling engineers to precisely identify opens, shorts and impedance changes—reducing troubleshooting time and minimising system downtime.

The TDR2050 builds on this capability with enhanced processing, an updated user interface and expanded diagnostic features, making it ideal for more complex cable networks and demanding fault-finding environments.

Key Capabilities

- **High-resolution, dual-channel testing:** Clear color traces on paired metallic cables improve fault diagnosis and enable comparison between channels or stored reference traces.
- **Wide range and accuracy:** Up to 20 km / 65 kft range with adjustable velocity factor (0.2–0.99) and multiple output impedances to suit diverse cable types.
- **AUTO setup and AutoFind modes:** Automated selection of pulse width, gain and impedance accelerates fault location, with manual fine-tuning available when required.
- **Trace memory and USB export:** Store and recall up to 100 traces for comparison or reporting, with simple data transfer to PC software via USB.
- **Rugged, field-ready design:** IP54-rated housings and long battery life (≈12 hours) support reliable operation in harsh industrial environments.



Together, these instruments deliver powerful, user-friendly cable fault location tools that support preventive maintenance, rapid fault isolation and improved uptime across industrial power, control and communication cable networks.

TDR1000/3P

Handheld Time Domain Reflectometer

The Megger TDR1000/3P is a compact, easy-to-use handheld time domain reflectometer designed for rapid fault location on metallic cables used in industrial power, control and communication systems. With a 5 km range, 0.1 m resolution and automatic setup functionality, it enables maintenance teams to quickly identify cable faults, reducing troubleshooting time and minimizing operational downtime.

Key Capabilities

- **Automatic setup and AutoFind functionality for fast fault location with minimal user input**
- **Ultra-fast pulse technology for accurate identification of near-end cable faults**
- **Trace Hold feature allows comparison between cables or fault conditions**

Cable Fault Location

- Supports all metallic cable pairs with selectable output impedances and adjustable velocity factor
- High-resolution display with clear trace visibility for easier fault interpretation
- Rugged IP54-rated design built for demanding industrial environments

Together, these instruments deliver powerful, user-friendly cable fault location tools that support preventive maintenance, rapid fault isolation and improved uptime across industrial power, control and communication cable networks.

EZ-THUMP

Portable Cable Fault Location Systems

The EZ-THUMP 3 kV Cable Fault Location System and 3 kV Dual Voltage EZ-THUMP are rugged portable fault-location solutions built for industrial underground and LV power cable networks, combining multiple fault-finding methods into one intuitive platform to find and pinpoint cable faults with speed and confidence. Designed to operate from battery or mains supply, these systems use integrated TDR with up to ~7.6 km range for pre-location and a 500 J surge/thump generator for pinpointing high-resistance, flashover and breakdown faults—helping maintenance and fault-finding teams reduce downtime and excavation time

Key Capabilities

- **All-in-one fault location:** Combines hipot testing, TDR pre-location, surge (thumping) pinpointing and insulation resistance checks in a single rugged unit.
- **Flexible output options:** Dual-stage surge energy at 1.5 kV/3 kV for the 3 kV model or single-stage at 4 kV for deeper fault energy delivery.
- **Automatic end-of-cable and fault finding:** Guided test sequences and automatic detection simplify operation and improve accuracy, even for less experienced users.
- **Battery and mains operation:** Portable design with internal battery support lets technicians work in remote or hard-to-access locations.
- **Safety-centric design:** Integrated HV interlocks (F-OHM) help ensure safe earthing connections before testing.
- **Clear interface:** Transflective colour display and easy controls support reliable operation in variable lighting and outdoor environments.

Ideal for industrial installers, utilities, power distribution teams and maintenance crews, the EZ-THUMP V3 series accelerates fault location from detection through pinpointing, helping teams restore service faster and with greater confidence, cut fault-finding time and improve safety when tracing earth faults in complex cable systems.



Get more info about
the EZ-THUMP here

Cable Fault Location

Ferrolux Rx

Audio Frequency Receiver

The Ferrolux Rx is a precision audio frequency receiver engineered for industrial line tracing and cable fault location in complex electrical networks, offering advanced functionality that helps technicians quickly and accurately identify cable routes, joints and faults—even when cables are densely grouped. It combines proven audio frequency locating methods with intelligent signal direction identification (SignalSelect) and enhanced display feedback, enabling reliable interpretation of signal strength, direction and installation depth in demanding field conditions.

Key Capabilities

- **Multi-method locating:** Integrates SuperMax, SignalSelect and traditional audio frequency functions for clear, precise line identification.
- **Effective in congested installations:** Designed to differentiate and track individual conductors even where multiple lines run closely together.
- **Lightweight, intuitive design:** Low-weight receiver with easy-read display supports longer tasks without fatigue or confusion.
- **Modular sensor architecture:** Plug-and-play sensor options allow flexible configuration for different locating tasks.
- **Expandable system:** Works with Ferrolux audio frequency generators to locate both cable routes and specific fault locations such as shorts or joints.

Ideal for industrial maintenance and fault-finding teams, the Ferrolux Rx enhances the speed and accuracy of cable tracing and fault analysis across power, control and communications networks.



Get more info
about the
Ferrolux here

Cable Fault Location

EasyLoc Rx/Tx

Audio Cable and Line Fault Locator

The EasyLoc Rx/Tx is a versatile audio frequency line and cable fault locator system built for industrial maintenance teams needing fast, accurate routing and fault identification on low-voltage distribution, control and communications cabling. Combining a compact receiver (Rx) with a paired transmitter (Tx) that injects a traceable signal, the EasyLoc system helps technicians quickly follow cable routes, locate breaks, short circuits and joints—even in complex installations or congested conduits—minimising downtime and avoiding unnecessary excavation or panel removal.

Key Capabilities

- **Paired Tx/Rx design:** Transmitter injects a clear audio frequency signal into the target cable while the receiver detects and follows that signal along the route for reliable tracing.
- **Accurate fault pinpointing:** Enables identification of cable breaks, shorts and joint locations without disconnecting systems or relying on guesswork.
- **Intuitive receiver display and audio feedback:** Visual and audible cues help technicians interpret signal strength and direction quickly in noisy or busy environments.
- **Lightweight, rugged construction:** Designed for frequent field use across industrial sites, control panels, plant cabling and buried lines.

Ideal for maintenance, commissioning and troubleshooting teams, the EasyLoc system accelerates fault location tasks, improves diagnostic confidence and supports rapid return to service across industrial electrical networks.



Get more info
about the
EasyLoc here



General Maintenance Tools

General maintenance technicians rely on versatile, reliable tools to keep industrial facilities running safely and efficiently. From routine inspections to fault-finding under pressure, their work demands fast, accurate measurements across electrical, mechanical and thermal domains. Tools such as installation testers, portable appliance testers, voltage and current clamps, thermal imaging and acoustic imaging tools provide the practical insight needed to identify problems early—often before they escalate into safety incidents, unplanned downtime or costly repairs.

Together, these tools support a proactive maintenance approach. Designed for daily use in demanding industrial environments, general maintenance test tools help technicians work more safely, troubleshoot more quickly and make confident decisions that protect assets, productivity and people.

IMT100 and IMT100X

Industrial Multi-tester

With multiple tests, such as DLRO four wire tests, inductance and capacitance, packaged into one instrument, these versatile multi-testers are ideal for photovoltaic installations, electric vehicles and industrial applications.

The **IMT100** is a versatile, handheld insulation and continuity tester designed for industrial maintenance, commissioning and fault-finding across a wide range of electrical assets, including photovoltaic systems, EV infrastructure and industrial power circuits.

The **IMT100X** is the latest evolution of the trusted IMT100, with all the same great features plus a range of additional key diagnostic functions. The key difference is that you can transfer your test results to CertSuite using Bluetooth for streamlined asset management and compliance reporting.

With full IEC 62446-2 Category 1 coverage when used with a current clamp, both instruments enable reliable verification of insulation resistance (up to 200 G Ω), continuity and low-resistance connections using two-, three- and four-terminal measurement methods. This makes them well suited for environments where accuracy, repeatability and traceability are essential to safe operation and compliance.

Built for demanding industrial use, the IMT100 and IMT100X combine intuitive operation with robust construction and advanced measurement capability. Both feature guided test setup, onboard data storage and a rugged IP54-rated housing to support efficient testing across industrial use cases, helping maintenance teams work faster while sustaining confidence in every result.



Key capabilities

- Supports **two-, three- and four-terminal resistance testing** with guard connection for accurate low-resistance measurements.
- Measures **insulation resistance up to 200 G Ω** , plus continuity and low resistance for cables, circuits and connections.
- **DC voltage with polarity indication** and **AC voltage with phase rotation** for commissioning and troubleshooting.
- **Guided lead-connection diagrams** to reduce setup errors and improve safety.
- **Internal memory for up to 256 test results**, downloadable via USB (IMT100) or CertSuite (IMT100X) for reporting and traceability.
- **Rechargeable battery system** with mains charger for extended field use.
- **Rugged IP54 housing** with rubber over-moulding for protection in industrial environments.
- **Complies with IEC 62446-2** for PV testing and **UN EEC R100** for EV-related testing.
- Supplied with a **full set of detachable industrial test leads** and a durable multipurpose carry case.

General Maintenance Tools

EVT100 and EVT100X

Electric Vehicle Tester

The **EVT100** is a robust all-in-one handheld tester designed for comprehensive electrical testing on **electric vehicles (EVs) and their components**. Built for workshops, production lines and service engineers, it simplifies routine inspections and compliance checks by combining multiple essential tests — such as insulation resistance up to 1 kV, low-resistance bond measurement, continuity, diode test and DC voltage with polarity verification — into a single compact instrument.

The **EVT100X** has all the same great features as the EVT100 plus a range of additional key diagnostic functions. The key difference is that you can transfer your test results to CertSuite using Bluetooth for streamlined asset management and compliance reporting.

Both instruments have an intuitive interface and rugged, IP54-rated housing. This safety-focused design inhibits testing when connections are incorrect or out of range, helping protect both users and equipment.

Key Capabilities

- **All-in-one EV testing:** Performs insulation, continuity, bonding and voltage tests needed for EV manufacture, service and maintenance.
- **Flexible resistance testing:** Supports two-, three- and four-wire low-resistance methods—including Kelvin bonding tests—for accurate measurements in electrically noisy environments.
- **Integrated data handling:** Stores up to **256 test results** internally and allows easy export via USB (EVT100) or Bluetooth (EVT100X) for reporting and record-keeping within CertSuite Asset.
- **Rugged, safe design:** Straightforward operation with guided lead setup, safety interlocks and durable construction for demanding workshop or field environments.

Ideal for EV service centres, manufacturers and technicians working on high-voltage battery systems and associated wiring, the **EVT100** and **EVT100X** deliver reliable multi-function testing in one portable package.



Get more info
about the
EVT100 here

General Maintenance Tools

Acoustic and Thermal Cameras

MPAC208 / MPAC208-IECEX

Advanced Acoustic Imaging Cameras

The **MPAC** acoustic **imaging range** enables industrial maintenance teams to see sound, making it fast and safe to locate ultrasonic sources associated with **gas and compressed-air leaks, mechanical faults, and electrical partial discharge (PD)**—all without interrupting operations. Designed for use across heavy industry, utilities, manufacturing, renewables and substations, these cameras support predictive maintenance, energy efficiency programmes and electrical condition assessment from a safe stand-off distance.

The **MPAC208** and **MPAC208-IECEX** deliver advanced diagnostic depth for more demanding industrial and high-voltage applications, including explosive atmospheres.

Key Capabilities

- **208-channel MEMS microphone array** with wide frequency response (2 kHz–100 kHz) for high sensitivity and precision.
- Detects **very small leaks, subtle mechanical degradation and early-stage partial discharge.**
- **Three different tests:**
 - **Gas Leak** – estimates leak rate, distance and cost impact to support energy-loss prioritisation.
 - **Partial Discharge** – locates PD sources and provides PRPD analysis for discharge classification.
 - **Mechanical** – identifies bearing wear, valve leakage, cavitation and vibration-related faults.
- Long-range detection (up to **200 m**) enables safe stand-off inspection in substations and HV environments.
- **Focus and SoundScan™ functions** suppress background noise and guide operators to off-screen sources.
- **Combined acoustic and thermal imaging**, with the optional thermal imaging module, allows acoustic and thermal correlation for faster root-cause analysis.
- **IECEX-certified version** available for use in explosive atmospheres.
- Rugged IP54 design, lightweight form factor and interchangeable batteries for extended field use.



General Maintenance Tools

The MPAC208 Pro Kit brings together everything required for early acoustic and thermal fault detection in one integrated, cost-effective solution — designed for reliability, efficiency, and confidence in the field.

What's in the kit:

- **A transport case** — built to protect the equipment in demanding industrial environments and during transport.
- **A safety warning guide and calibration certificates** – QR codes link directly to Megger's website, allowing you to download the latest user guides in your preferred language.
- An **MPAC208 or MPAC208-IECEX** Professional Acoustic Imaging Camera.
- **Dual hand straps and a neck strap** – providing secure and comfortable handling during extended surveys and wide-area inspections.
- **An MPAC-V Verifier** – allowing you to verify the operational performance of the MPAC208 by emitting a controlled range of frequencies, reducing the need for frequent recalibration.
- **The TM640 thermal imaging module featuring a high-resolution 640 by 512 sensor** – enabling acoustic, optical, and thermal imaging in a single inspection.
- **A high-quality USB-C power adapter and two battery packs** – supporting uninterrupted operation throughout the working day.
- USB-A and USB-C memory stick and a 64-gigabyte microSD card.
- **Headphones for acoustic analysis** – the MPAC208 converts frequencies outside human hearing into audible signals, allowing users to both see and hear fault signatures.
- **A cleaning kit** – helping maintain microphone and lens performance when working in dusty or harsh environments.

MPAC128 / MPAC128-ATEX

Acoustic Imaging Cameras

The **MPAC128** and **MPAC128-ATEX** provide an accessible, rugged entry point into acoustic imaging, ideal for everyday maintenance.

Key Capabilities

- 128-microphone MEMS array for reliable localisation of ultrasonic sound sources.
- Ideal for **compressed-air and gas leak detection**, mechanical faults and general ultrasonic inspection.
- Clear visual overlay makes leaks and faults easy to identify and prioritise.
- **ATEX-certified version** available for hazardous environments.
- Lightweight, portable and simple to deploy for routine industrial surveys.

Together, the MPAC128 and MPAC208 series provide a scalable acoustic imaging solution—from routine industrial inspections advanced electrical and mechanical diagnostics—helping organisations reduce energy losses, detect faults earlier, and transition from reactive



General Maintenance Tools

TC120

Thermal Camera

The TC120 is a compact, easy-to-use thermal camera designed for routine industrial, electrical and mechanical inspections, helping maintenance teams quickly identify overheating components, load imbalances and developing faults without shutting down equipment. It's clear thermal imagery and simple operation make it ideal for everyday condition monitoring where fast decisions and reliable results are required.

Key Capabilities

- **120 × 90 thermal resolution for clear identification of hot spots and temperature anomalies**
- **Multiple viewing modes including thermal, visible light, fusion and picture-in-picture for easy fault correlation**
- **Integrated laser pointer and LED light to accurately locate issues, even in low-light environments**
- **Wide temperature measurement range suitable for electrical, mechanical and building applications**
- **USB image transfer for simple documentation and reporting**
- **Compact, lightweight design for comfortable use during routine inspection rounds**

The TC120 provides a practical entry point into thermal imaging, enabling industrial maintenance teams to detect problems early, improve safety and support proactive maintenance programmes.



General Maintenance Tools

TC256

Thermal Camera

The TC256 is a high-resolution handheld thermal camera designed for more demanding industrial, electrical and building inspections, where greater image clarity is essential for identifying subtle or early-stage faults. With its **256 × 192 pixel infrared detector**, the TC256 delivers sharper, more detailed thermal images than entry-level models, helping maintenance teams confidently diagnose overheating components, load imbalances, insulation defects and energy losses during routine or investigative inspections.

Key Capabilities

- **256 × 192 thermal resolution for clearer, more detailed fault identification**
- **Multiple imaging modes: Infrared (IR), Visible Light (VL), Fusion (MIF) and Picture-in-Picture (PIP) for accurate fault context**
- **Built-in laser pointer and floodlight for precise targeting and improved visibility in low-light areas**
- **USB and WiFi connectivity for fast image transfer, analysis and professional reporting**
- **Compact, ergonomic design suitable for extended inspection routines**

- **Supplied with carry case and accessories for reliable day-to-day field use. Companion App available**

The TC256 is ideal for industrial maintenance teams that need enhanced thermal detail, flexible imaging options and efficient reporting to support proactive maintenance and informed decision-making.



TC256P

Thermal Camera

The TC256P delivers professional-grade thermal imaging in a truly pocket-sized format, making it ideal for technicians who need fast, reliable inspections without carrying bulky equipment. With its 256 × 192 pixel thermal resolution, the TC256P provides sharp, detailed images that help identify early-stage faults such as overheating connections, insulation defects and mechanical issues across electrical, HVAC and building applications—all in a device that fits easily into a pocket or tool bag

Key Capabilities

- **256 × 192 thermal resolution for clear detection of subtle temperature differences**
- **Multiple imaging modes: Infrared (IR), Visible Light (VL), Fusion (MIF) and Picture-in-Picture (PIP) for accurate fault context**
- **Ultra-portable, pocket-sized design for quick inspections and maximum mobility**
- **Integrated laser pointer and floodlight for precise targeting and use in low-light environments**
- **USB and WiFi connectivity for fast image transfer, analysis and reporting**
- **Supplied with protective case and accessories for reliable day-to-day field use. Companion App available**



The TC256P is ideal for maintenance professionals who want the performance of a full thermal camera in a compact, highly portable tool—supporting proactive inspections, improved safety and efficient fault diagnosis on the move.

General Maintenance Tools

TC640

Professional Thermal Camera

The TC640 is a high-specification, professional thermal camera designed for demanding industrial, electrical and building diagnostics where maximum image clarity and analytical capability are essential. With its 640 × 480 pixel infrared resolution, the TC640 reveals fine temperature differences that lower-resolution cameras can miss, enabling engineers to identify early-stage faults, verify repairs and make confident maintenance decisions in critical environments.

Key Capabilities

- **640 × 480 infrared resolution for exceptional thermal detail and precise fault identification.**
- **Advanced imaging modes including IR, visible light, fusion (MIF) and picture-in-picture (PIP) for clear contextual analysis.**
- **Multiple focus options (manual, semi-auto, touch and continuous autofocus) for consistently sharp images in any scenario.**
- **Integrated laser range finder and floodlight for accurate targeting and improved visibility in challenging conditions.**
- **Full connectivity with USB, Wi-Fi and Bluetooth® for easy data transfer, collaboration and cloud integration. Companion App available**
- **On-camera analysis and PDF reporting to streamline inspection workflows from capture to documentation.**

The TC640 is the ideal choice for professional thermographers and maintenance teams who need maximum performance, flexibility and reporting capability to support predictive maintenance, compliance and asset reliability programmes.



Installation/Multifunction testers and multimeters

MFT-X1

Installation Tester

The MFT-X1 is a high-performance multifunction tester engineered for industrial maintenance, facilities and commissioning environments, where speed, accuracy and uptime are critical. Designed to support routine verification, fault finding and compliance testing on low voltage electrical systems, it delivers fast, repeatable results while minimising disruption to operations. Advanced measurement confidence, automated test routines and robust safety features help maintenance teams make reliable decisions in demanding industrial settings.



Key Capabilities

- **Uninterrupted operation:** Rapid, tool-free battery swap keeps testing moving during planned maintenance or shutdown windows
- **Reliable results in complex networks:** TrueLoop™ and Confidence Meter™ technologies deliver dependable loop measurements, even in electrically noisy environments.
- **Instant data transfer:** Connect to CertSuite Installation via Bluetooth to upload test results instantly.
- **Faster compliance testing:** Automated RCD test sequences reduce manual steps and testing time.
- **EV-ready for industrial sites:** Complete EV charge point testing when used with EVCA210 or EVX100 adaptors.
- **Safety-led design:** Built to protect operators when working on live industrial installations.
- **Future-proof platform:** In-field firmware upgrades ensure continued compliance with evolving standards.
- **Digital workflow integration:** Seamless connection with CertSuite Installation simplifies reporting, certification and asset records.

Supplied with a comprehensive accessory set—including industrial test leads, probes, clips, dual Li-ion batteries, charger and rugged carry case—the MFT-X1 is a dependable, productivity-driven solution for industrial electrical testing and maintenance teams.



Get more info
about the
MFT-X1 here

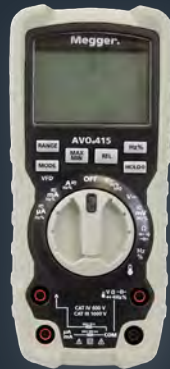
General Maintenance Tools - Multimeters

AVO415

Multimeter

Reliable and rugged, built for demanding environments with added protection and precision.

- Safety rated CAT III 1000 V, CAT IV 600 V
- True RMS AC current and voltage
- High resolution 6000 count display
- Frequency up to 10 MHz
- Resistance, continuity and diode measurements
- Current measurement to 10 A
- Variable Frequency Drive (VFD) voltage measurement
- 100 mF capacitance range
- Bright back-light display
- IP67 dust-proof and waterproof rate



Get more info about the AVO415 here



Get more info about the AVO840 here



Get more info about the AVO850 here



AVO840

Multimeter

Designed for comprehensive site diagnostics with mobile app support and real-time data sharing.

- Safety rated CAT III 1000 V, CAT IV 600 V
- True RMS AC voltage and current for accurate measurements on complex signals or non-linear loads. AC bandwidth up to 1 kHz
- Low input impedance helps prevent false readings due to ghost voltages
- Min/Max/Average to record signal fluctuations
- Backlight for work in dimly lit areas
- IP44 (splashproof and dust resistant) rating
- Bluetooth® connectivity
- Easy control with the free Megger AVO Link app



AVO850

Designed for precision fault-finding in labs, production lines, and demanding industrial settings.

- Safety rated CAT III 1000 V, CAT IV 600 V
- True RMS AC current and voltage
- High accuracy (\pm)0.05%
- Measure frequency up to 10 MHz
- Resistance, continuity and diode measurements
- 10 mF capacitance range
- High resolution 50,000 count
- Current measurement to 10 A
- Analogue bar graph
- Bluetooth® interface and Megger app



General Maintenance Tools - Clamps

FFC3450

The FFC3450 is a Bluetooth® -enabled flexible Rogowski-coil clamp meter designed for industrial environments, delivering safe, accurate measurement of large AC currents up to 3000 A on hard-to-access conductors with remote monitoring via the Megger Link app.



Get more info about the Clampmeter range here

DCM340

A versatile clamp meter-multimeter hybrid offering AC/DC voltage and current up to 600 A/600 V, resistance and frequency measurement, with peak and min/max functions for reliable testing across renewable energy, battery, EV and heavy-duty electrical applications.



DCM305E

The DCM305E earth leakage clamp meter delivers ultra-sensitive measurement down to 0.001 mA, with stable true-RMS readings and visual/audible alarms, making it ideal for quickly diagnosing leakage currents and nuisance RCD trips in electrical installations.



DCM1500

The DCM1500 is a high-capacity True RMS clamp meter designed for industrial and renewable energy applications, delivering accurate measurement of up to 1500 A AC/DC and 1000 V DC on large conductors and non-linear loads with a wide jaw opening and fast response.



DCM320

The DCM320 is a compact, pocket-sized clamp meter that measures up to 400 A AC and adds essential voltage, resistance and continuity functions, making it ideal for routine electrical maintenance and basic multimeter testing where portability matters.



Portable Appliance Testing

PAT250

Ideally suited to **fast and efficient in-house appliance testing**, the handheld PAT250 can be remotely controlled from the CertSuite PAT app via a Bluetooth wireless connection. This makes it extremely convenient for users and provide access to a host of additional, advanced features. The PAT250 has all of the functionality of the PAT150 but also supports custom test sequences and direct transfer of results to CertSuite PAT.

Both the PAT250 and PAT250SRX models are supplied with a one-year licence for CertSuite PAT as standard. The PAT250SRX also includes a rechargeable battery pack for uninterrupted testing and reduced downtime.

- **Testing for Class I and Class II appliances and extension leads**
- **Simple PASS/FAIL indication with adjustable PASS/FAIL limits**
- **Automatic, manual and custom test sequences**
- **500 V insulation and leakage testing for general use**
- **250 V insulation and leakage testing for safe testing of IT equipment and surge protected devices**
- **Substitute and mains-powered leakage testing**
- **Instant generation of test reports with no need to fill in results manually**
- **Rechargeable battery**
- **Tough and rubber armoured with built-in front cover**
- **Hardened, scratch-proof display window**



Portable Appliance Testing

PAT400 Series

The PAT400 series of portable appliance testers is engineered for industrial and commercial environments where large volumes of equipment must be tested efficiently, consistently and with full traceability. Ideal for manufacturing sites, industrial facilities, plant maintenance teams and equipment hire operations, the range includes the PAT410, PAT420 and PAT450, offering scalable functionality to match different levels of testing complexity.

All models support both manual and automatic test sequences, enabling fast, repeatable testing of tools, machinery and portable electrical equipment used on site. All models have a large, illuminated colour display with pass/fail indication.

- Customer database - up to 100 customers with 2000 locations possible for each customer
- Test item database - up to 10,000 tests results
- Each works with approx. 30 preset test groups
- Adjustable limit values and test times
- Login to the test device with a username and personal PIN
- Complete database backup and, if necessary, restoration via USB memory stick
- PAT420: 200 mA +10 A _25 A Protective conductor current
- PAT 450: 200 mA +10 A _25 A protective conductor current and insulation test at 1500 V and 3000 V
- Barcode scanner/ RFID reader and printer can be connected to the PAT via USB
- Five soft keys for quick access to frequently used functions



Additional Maintenance Tools

MET1000

The MET1000 is a rugged, open-jaw industrial tester that enables safe, fast measurement of voltage, current, phase rotation and single-pole presence on live busbars and mains tails, delivering True RMS accuracy and IP65 protection for confined, high-demand environments.



MPCC230

The MPCC230 is a compact, pocket-sized multifunction socket checker that combines True RMS voltage measurement, RCD testing, loop impedance, touch voltage and harmonic analysis, enabling fast, standards-compliant circuit diagnostics for on-the-go electrical inspection and maintenance. (UK and EU Sockets Only)



TPT420

The TPT420 is a rugged, battery-free voltage and continuity tester rated CAT IV 1000 V, measuring up to 1000 V AC and 1500 V DC with phase rotation, single-pole testing and IP64 protection, making it ideal for reliable use across electrical, industrial, automotive and solar applications.



MPU690

The MPU690 is a compact proving unit that safely verifies the correct operation of 2-pole voltage testers by simulating stepped AC test voltages from 50 V to 690 V, with automatic power management and a built-in magnetic holder for convenient on-site use.



MCT105

The MCT105 cable locator kit enables fast, accurate tracing of live or dead cables, conductors and metal pipes in walls or underground, helping technicians quickly identify circuits, breaks, short circuits and protective devices with visual and audible guidance.



PSI410

The PSI410 Phase Sequence Indicator is a rugged, self-powered tool that quickly confirms correct phase rotation, detects missing phases, and verifies three-phase supplies for motors and industrial equipment using clear LED and audible indication.



Find more about our tools and accessories here

Additional Maintenance Tools

MFL205



The MFL205 is an easy-to-use fuse and circuit breaker locator that quickly identifies the correct protective device for a circuit using audible and visual indication, supporting safe and efficient fault finding on 110 V and 230 V installations.

MSL10



The MSL10 is a simple, easy-to-use detector for locating wooden or metal studs and live AC cables behind walls, providing clear visual and audible indications with adjustable depth settings for accurate, safe work during construction and renovation.

PVM210



The PVM210 is a compact, pocket-sized solar power meter designed for photovoltaic engineers, enabling fast and accurate measurement of solar irradiance up to 1999 W/m² to optimise panel positioning and support short-circuit current calculations.

Socket Adaptor range



The socket adaptor enables safe, non-intrusive electrical testing via standard socket outlets, providing colour-coded, 4 mm connections for accurate resistance and voltage measurements without exposing live terminals.

MLM50



The MLM50 is a compact, IP54-rated laser distance meter that delivers accurate measurements up to 50 m with automatic area and volume calculations, making it ideal for fast, reliable professional measuring tasks on site.



VF5 and VF6 EX

VF5 and VF6 EX are rugged non-contact AC voltage detectors rated from 12–1000 V, providing visual, audible and vibration alerts with an integrated LED torch for safe detection of live conductors, with the VF6 EX certified for use in hazardous industrial environments.



VF-T5

The VF-T5 is a versatile dual-function tool that combines non-contact AC voltage detection (12–1000 V) with infrared temperature measurement, enabling fast, safe identification of live circuits and overheating components across electrical, industrial and HVAC applications.

Apps

Megger Link App

Wireless Monitoring and Data Capture

The Megger Link App extends compatible Megger test instruments by enabling wireless connectivity via Bluetooth, giving technicians greater flexibility, safety and efficiency during industrial electrical testing. By displaying live measurements remotely on a smartphone or tablet, Megger Link allows users to monitor results from a safe distance, reduce time spent at the test point, and capture data more effectively in the field.

Designed to complement Megger's connected clamp meters and instruments, the app supports real-time trending and data export, helping maintenance teams visualise results, share findings and integrate measurements into reports or further analysis workflows. Whether used for spot checks or longer monitoring tasks, Megger Link enhances productivity while keeping testing simple and intuitive.

Key Capabilities:

- **Live remote display:** View real-time readings on a mobile device without staying at the measurement point.
- **Trend graphing:** Visualise changes in measurements over time for better diagnostics.
- **Data download and export:** Save and export results (e.g. CSV) for reporting or analysis.
- **Bluetooth connectivity:** Simple pairing with compatible Megger instruments.
- **Improved safety and efficiency:** Monitor high-current or hard-to-access measurements from a safe location.

Megger Link provides a practical bridge between handheld instruments and digital workflows, supporting modern industrial maintenance, troubleshooting and data-driven decision-making.

Megger AVO Link App

Megger AVO Multimeter Mobile Device Application

The Megger AVO Link App extends the capabilities of your Megger AVO Digital Multimeter by centralising measurement data and device control on your mobile device. Secure Bluetooth connectivity enables straightforward pairing, remote adjustments, and real-time or recorded data viewing for streamlined analysis and reporting. With project management features, intuitive file organisation, and direct sharing options, technicians can work more safely, efficiently, and confidently across their asset ecosystem.

The Megger AVO Link App gives you precise control and clear oversight of AVO Digital Multimeter measurements — all from your mobile device. Remotely manage modes and key instrument functions, create structured projects for every job, and access both live and saved readings for analysis. The app simplifies data import, file management, and sharing, ensuring technicians can report and collaborate efficiently. With an intuitive design and on-board user guide, AVO Link delivers safer, faster, and more connected testing — wherever your work takes you.

Key Capabilities:

- **Live remote display:** View real-time readings on a mobile device without staying at the measurement point.
- **Robust Bluetooth connectivity:** Ensures seamless, secure pairing between your mobile device and Megger AVO Digital Multimeter, supporting uninterrupted wireless integration.
- **Project-based data management:** Enables the creation and organisation of multiple projects, consolidating all measurement data under dedicated project files for efficient tracking and retrieval.

- **Full remote instrument control:** Offers remote adjustment of measurement modes and device functions — including Hold, Max/Min, Peak, Relative, and Range — directly from your mobile device, reducing the need to interact physically with the multimeter.
- **Live and saved data viewing:** Provides real-time access to ongoing measurements and the ability to review saved graphical data, supporting precise monitoring and post-measurement analysis.
- **Data import and file management:** Facilitates direct import of saved data files from the multimeter, allowing sorting by date or file type, and streamlined file naming with editable or autoformatted options.
- **Screenshot and annotation capabilities:** Lets users capture graphical data screenshots, add detailed notes, and attach these to data files for comprehensive record-keeping.
- **Integrated data sharing:** Supports direct email and third-party sharing of measurement records and notes, ensuring immediate communication and streamlined reporting.
- **Custom setup and alarms:** Allows configuration of sample rates, recording durations, and high/low limit alarms to support tailored testing and rapid anomaly detection.
- **On-board user guide:** Includes an integrated user guide for on-demand reference and guidance during field work.

The Megger AVO Link App gives technicians precise management, analysis, and sharing of measurement data from one platform. Its project-based design and remote functions reduce manual work, speed up workflows, and strengthen maintenance across your asset ecosystem. With live instrument control, robust data management, and flexible sharing, AVO Link improves safety, efficiency, and decision making on every site.

Megger MPCC Link App

Megger Pro Circuit Checker Mobile Device Application

Managing test records in the field demands precision and efficiency. The Megger MPCC Link App provides a unified ecosystem that transforms your mobile device into a powerful data management tool for the Megger Pro Circuit Checker. We understand the pressure to maintain accurate compliance records while keeping your operations moving. This application streamlines your workflow, allowing you to capture, organise, and share vital test data seamlessly.

It's built to eliminate manual data entry, ensuring your records are accurate and secure. You can build a holistic view of your asset health and maintain a consistent, reliable archive of your testing history. Our software transforms data into a structured format you can trust.

Key Capabilities:

- **Instant data capture:** Scan the QR code generated by your Megger Pro Circuit Checker to download up to 64 consecutive RCD and Loop test records instantly.
- **Comprehensive record keeping:** Add custom comments, asset information, operator details, and company names to each test record directly from your mobile device.
- **Seamless data export:** Save or export your structured data in PDF or CSV formats, send it via email, or share it through other messaging applications.
- **Centralised archiving:** Archive and retrieve historical results from multiple Megger Pro Circuit Checkers in one unified location.
- **Direct resource access:** Link directly from the application to the Megger Pro Circuit Checker webpage to access user guides, FAQs, and dedicated product support.

Equip your team with the tools they need to maintain impeccable records and improve operational efficiency. Download the Megger MPCC Link App today to integrate your testing processes into a modern, data-driven workflow.



Megger Limited
Archcliffe Road
Dover CT17 9EN
United Kingdom

www.megger.com

Megger [®]

IndustrialCatalogue_EN
The word 'Megger' is a registered trademark. Copyright © 2026